



HARRISON PARK MASTER PLAN

DRAFT MASTER PLAN REPORT

We acknowledge the traditional custodians of the land, and pay our respects to their elders past present and emerging, recognising their continuing connection to land, waters and culture.

Issue	Title	Date	Prepared	Checked
1	Analysis Report	May 2021	BP	SH. FZ
2	Masterplan Draft - working Group 2	June 2021	BP	SH. FZ
3	Masterplan	September 2021	FZ	SH
4	Masterplan Report	September 2021	FZ	SH
5				
6				
7				
8				

CONTENTS

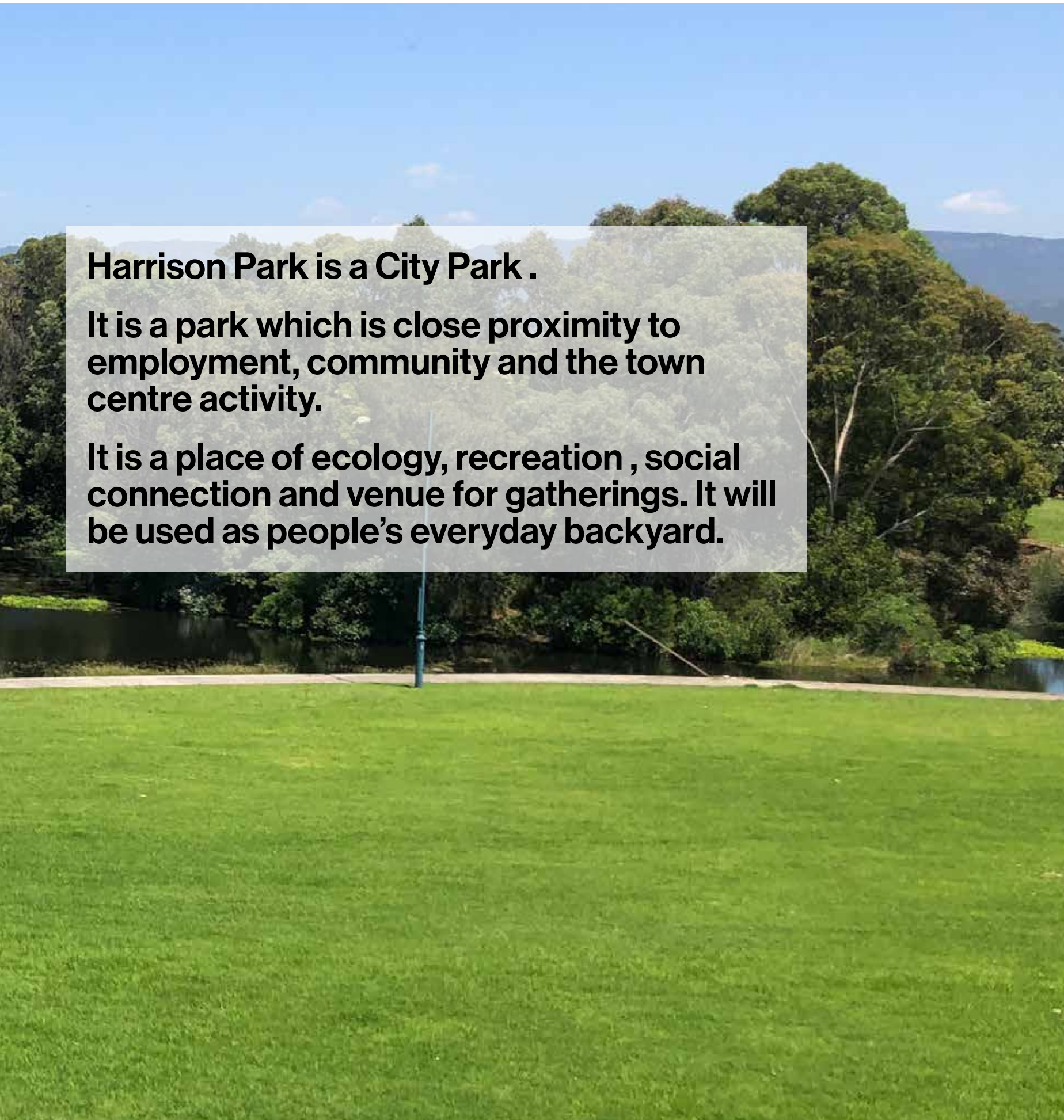
MASTERPLAN REPORT

Introduction	4
Regional Context	5
Local Context	6
Current Use	7
Existing Facilities	8
Topography	9
Ecology	10
Site Analysis	11
Stakeholder Consultation	12
Site Opportunities Plan	25
Master Plan	26

APPENDIX

Heritage report





Harrison Park is a City Park .

It is a park which is close proximity to employment, community and the town centre activity.

It is a place of ecology, recreation , social connection and venue for gatherings. It will be used as people's everyday backyard.

INTRODUCTION

01

INTRODUCTION

Harrison Park, a city wide park, located in the Shellharbour City Centre is strategically located adjacent the Shellharbour Civic Centre , Stockland Retail Centre and Blackbutt residential area.

The park contains a range of facilities including Blackbutt Youth Centre, a memorial and the City Pond.

The key outcome of the master plan is to put forward and vision and a series of upgrades to the park which meet the needs of the existing and future community.

The Park is identified as a 'city wide park' (the equivalent of a regional facility serving tourists and communities within 10km) offers significant potential as a key destination – taking advantage of its strategic location.

Harrison Park is of key importance as open space to the development of the mixed use precinct of Shellhabour City Centre, serving residents and visitors to the precinct.



REGIONAL CONTEXT

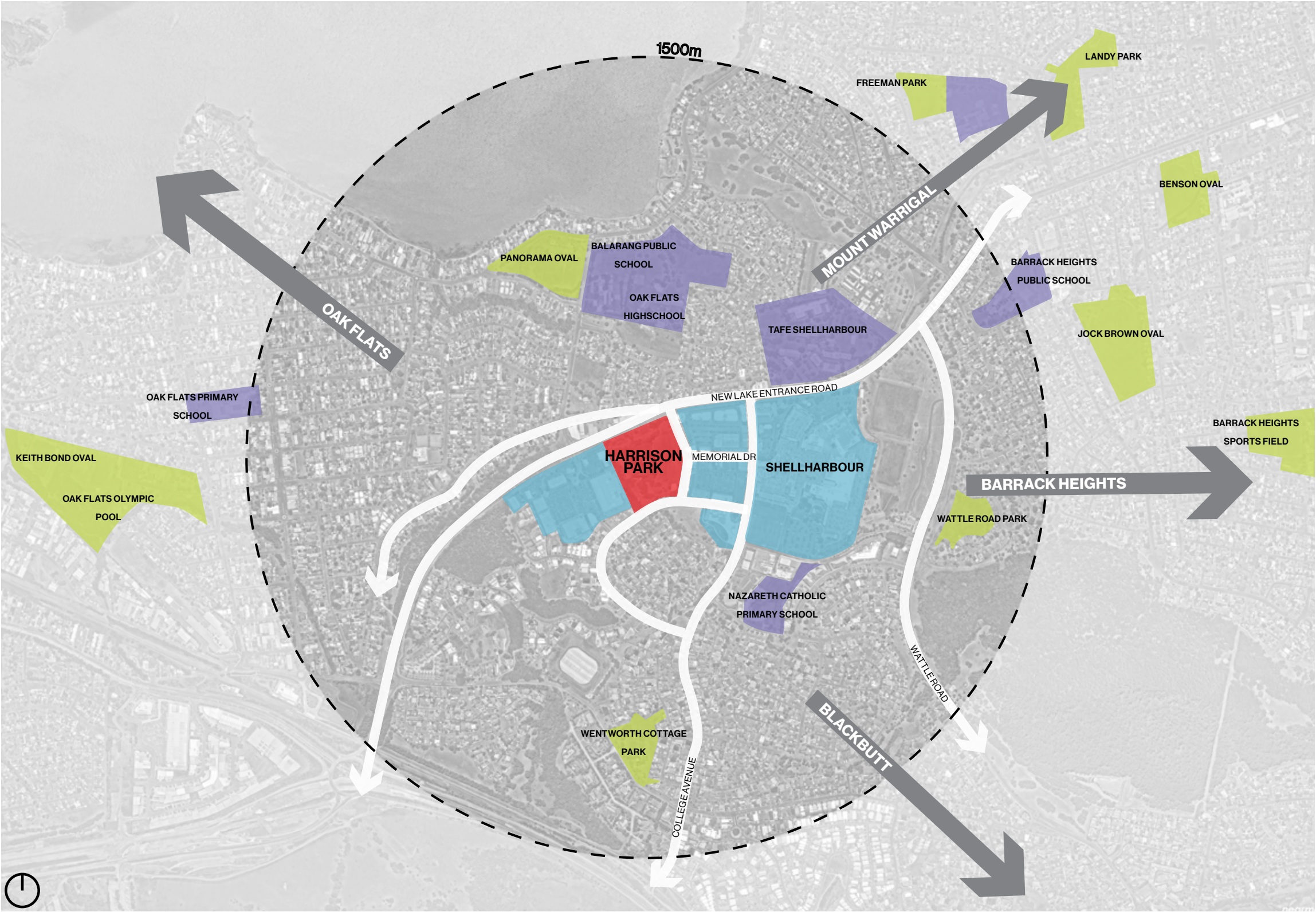
Physical context

Harrison Park is located within the Shellharbour City Centre which falls within the Shellharbour LGA.

Economic context

Shellharbour is a mix of residential and commercial uses with many uses anchored along New Lake Entrance Road. The core City Centre is located immediately adjacent, to the east of Harrison Park.

Harrison Park fronts New Lake Entrance Road and is surrounded by Shellharbour Civic precincts to the East and West. Residential dwellings are situated to the South of the park. Harrison Park is located alongside neighbourhoods of Oak Flats, Mount Warrigal and Blackbutt.



LOCAL CONTEXT

Recreation context

- Oak Flats Bowling Club
- Stockland Retail Park
- Panorama Oval
- Balarang Public School
- Oak Flats High-school
- Shellharbour Shopping/Civic Centre
- TAFE Shellharbour
- Nazareth Catholic Primary School

Accessibility

Bus Stops along New Lake Entrance Road

Located in the heart of Shellharbour City Council Harrison Park is surrounded on the western and northern edge along New Lake Entrance Road by commercial activity, while on the eastern side by mix use development with commercial, offices and residential. Future development will are set to take place along Minga Avenue. The park is facing mainly residential areas on the south.

LEGEND

Site

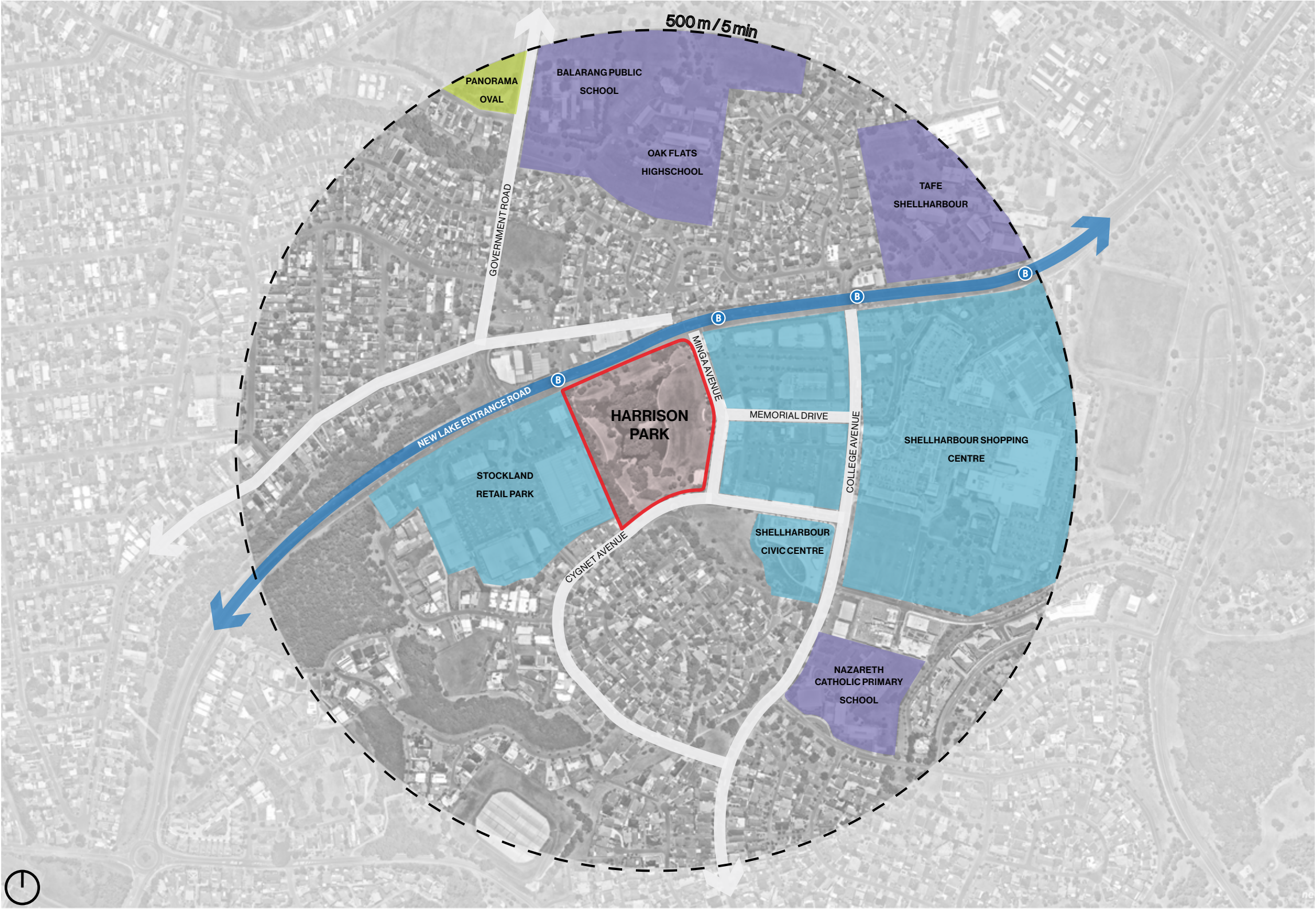
Parks + Reserves

Education

Commercial Areas

B

Bus Stops



CURRENT USE

Harrison Park Components

- 1. Water Retention Pond
- 2. Memorial
- 3. Youth Centre
- 4. Carpark

The large open space in Harrison park provides a venue for events and main anniversaries during the year.

The park is a city wide park where locals and visitors come from all around Shellharbour. Key events include ANZAC Day celebrations which take place in the at the end of Memorial Drive, on the elevated part of the park.

The Youth Centre is offering activity and community services and activates the south eastern side of the park, nearby the car park.

The wetland is at the centre of the park is well vegetated providing habitat for the local fauna and flora. It also provides water storage capacity for the local area.



EXISTING FACILITIES



01/ Youth Centre

- Opening Hours 3:30-5pm
- Drama Program
- Games Afternoon
- Cooking Program
- Mental Health Services



02/ Memorial

- 500m²
- Located on Memorial Drive



03/ Retention Pond

- Flooding Basin
- Ecological Area
- Mix Between Built Edge and natural edge



04/ Lawns

- 41500m²
- Approximately 24500m² Steep Lawn Space



05/ Carpark

- 900m²
- Asphalt Car Park
- 18 Car Parking Bays



Harrison Park is a place of significant scenic and recreation value with potential to develop as a destination open space for the local area and wider district.

TOPOGRAPHY & FLOODING

The maps of 1% AEP shows the lower area to be flood affected and used for water storage, while the southern end of the site is also affected. The permanent water is crossing the car park and Cygnet Avenue.

The existing Youth Centre is outside both 1% AEP and PMF level. If any expansion of the building will be proposed they will need to consider and respond to the actual flooding restriction and guidelines.

A Site Emergency Response Flood Plan is potentially required as this reserve is used by public and some parts of the reserve will be affected during the PMF event. As it is unsafe for the children and senior citizens and/or elder people in the High Hazard zone during the 1% AEP event, for evacuation purposes, it is needed to demonstrate that there is reliable access for pedestrians during the 1% AEP event.

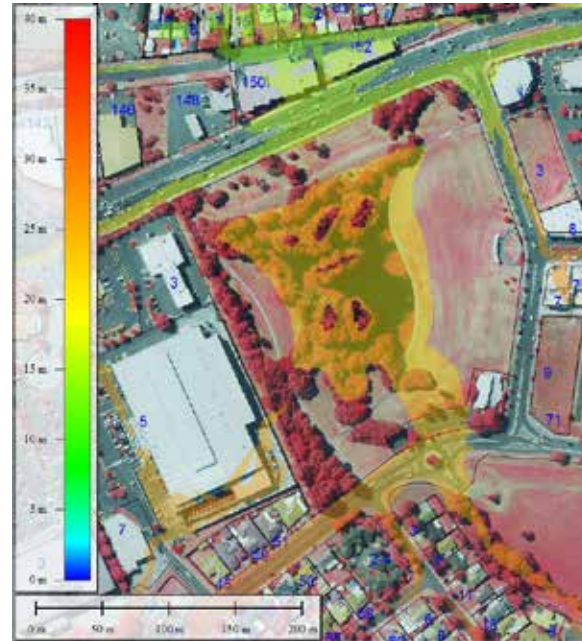


Image courtesy of Shellharbour City Council - Harrison Park 1% AEP Level

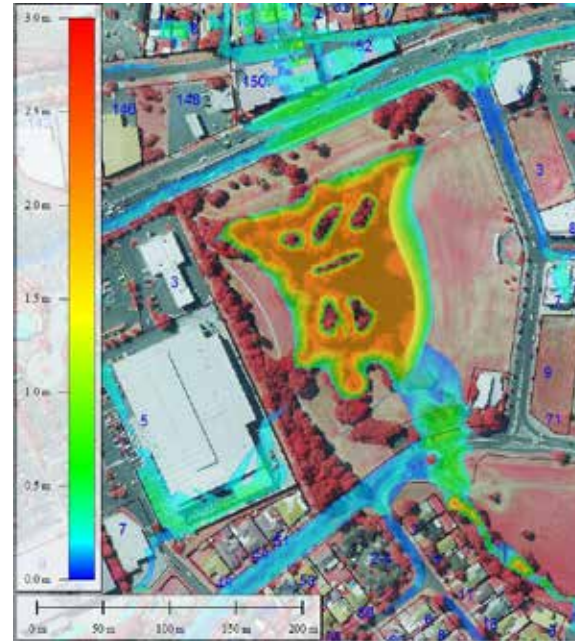


Image courtesy of Shellharbour City Council - Harrison Park 1% AEP Depth

Note:

- Annual exceedance probability (AEP) – is the probability that a flood of a given or larger magnitude will occur within a period of one year. Its reciprocal is equivalent to average recurrence interval.
- Probable maximum flood (PMF) - is the largest flood that could conceivably occur at a particular location.

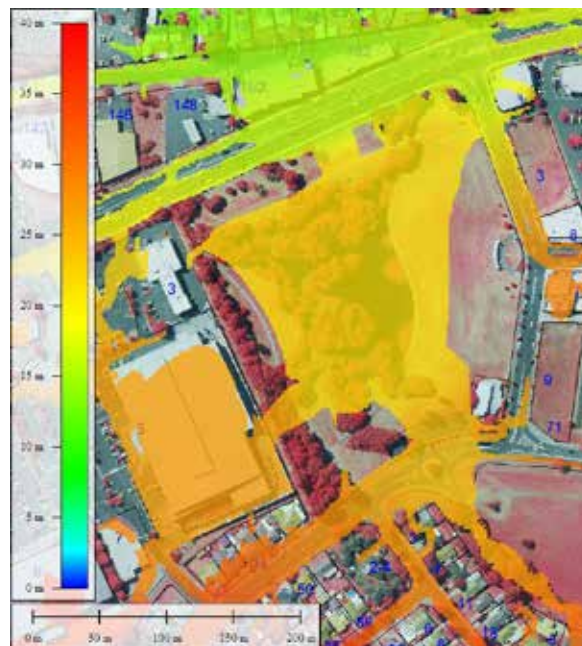


Image courtesy of Shellharbour City Council - Harrison Park PMF Level

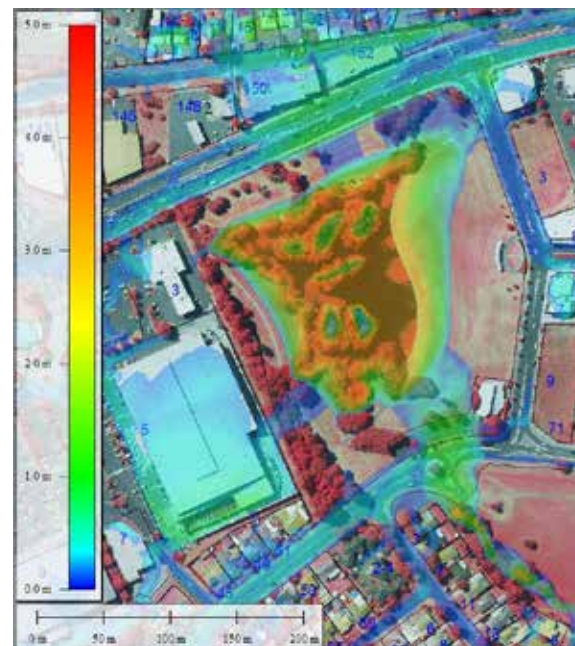


Image courtesy of Shellharbour City Council - Harrison Park PMF Depth

ECOLOGY

State Vegetation Map

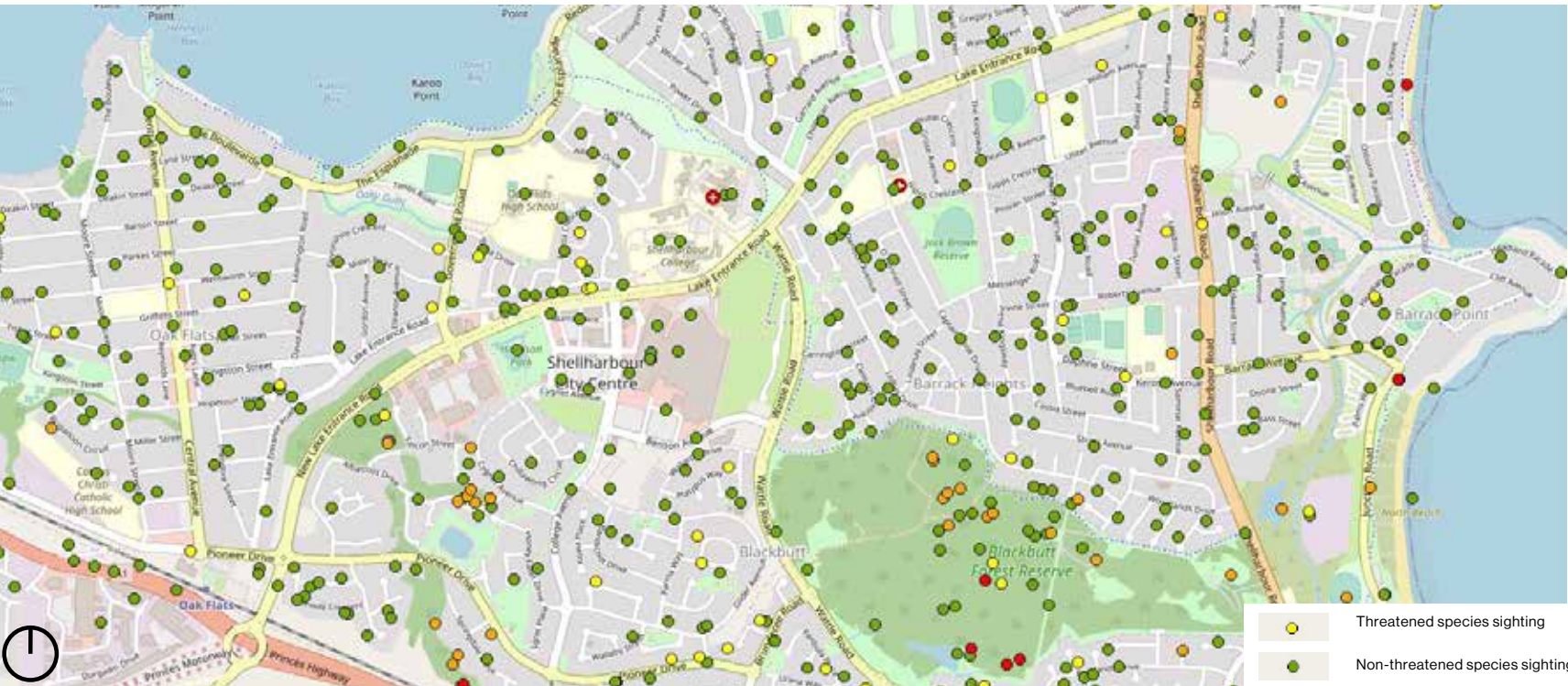
- Plant community mapping by Office of Environment and Heritage.
- No identified significant plant communities within the area immediately surrounding the site.

State Vegetation Map. Mapping by NSW Office of Environment & Heritage, accessed via SEED, 02/11/2020
NSW Bionet - Species Sightings. Mapping by NSW Office of Environment & Heritage, accessed via SEED, 02/11/2020



NSW Bionet

- Maps recorded species sightings within and in close proximity to the site.
- Threatened species of birds and bats were recorded in the local area.
- No threatened species were recorded within the site or immediate surroundings



HERITAGE STUDY

During the master plan process a study for Non-Aboriginal Heritage Constraints Analysis and Aboriginal Due Diligence Assessment was undertaken by Artefact. The full analysis and report it can be found in the appendix at the end of this document.

The Non-Aboriginal Heritage Constraints Analysis shows that no heritage items are in or in the proximity of the park.

Recommendation;

- While the Shellharbour City Centre War Memorial not listed on the NSW War Memorials Register or any statutory or non-statutory heritage registers, it is likely to contain social significance amongst members of the local community. For example, it is included in the Monuments Australia website,5 on the National Register of War Memorials,6 and used for Anzac Day memorial services.

The Aboriginal Due Diligence Assessment shows that no recorded Aboriginal artefacts or intact areas where Aboriginal artefacts are likely to occur beneath the ground surface have been identified within study area.

- Consultation with Illawarra Local Aboriginal Land Council and the South Coast People Native Title Claimants should take place.
- In accordance with the due diligence guidelines, no further archaeological investigation is required, and works can proceed with caution.
- Unexpected Aboriginal objects remain protected by the NPW Act. If any such objects, or potential objects, are uncovered during the activity, all work in the vicinity should cease immediately.
- If human remains, or suspected human remains, are found in the course of the activity, all work in the vicinity should cease, the site should be secured and the NSW Police and the Heritage NSW should be notified.
- Workers on the project should be made familiar with the unexpected finds procedure and it is recommended that a short heritage induction is provided by the proponent (or relevant group).



Image courtesy of Artefact - Location of heritage listed items surrounding the study area.

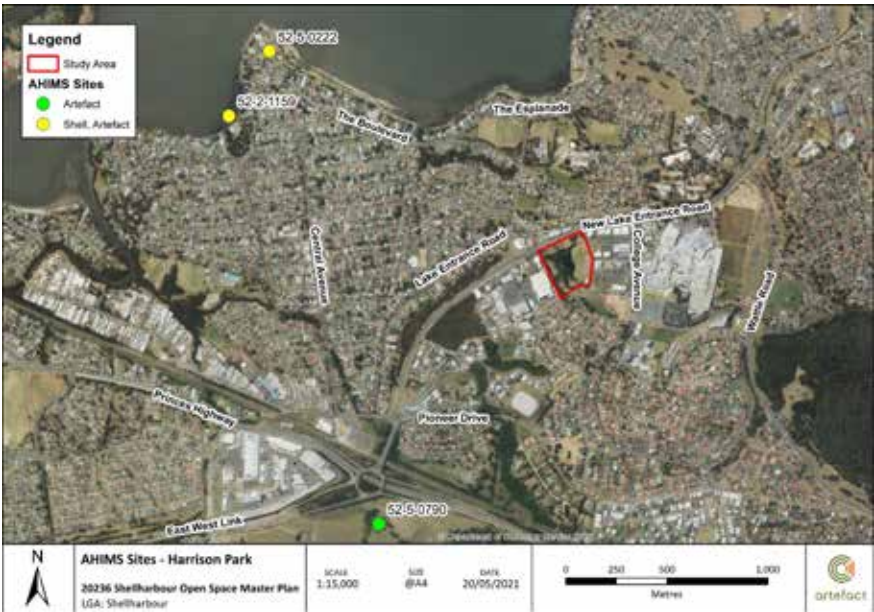


Image courtesy of Artefact - AHIMS map



Image courtesy of Artefact - 1961 aerial photograph showing undeveloped land within the stud area (Harrison Park) and surrounding properties. Source: Spatial Lands Viewer.



Image courtesy of Artefact - 1990 aerial photograph showing undeveloped land within the stud area (Harrison Park) and surrounding properties. Source: Spatial Lands Viewer.



Image courtesy of Artefact - 2001 aerial photograph showing undeveloped land within the stud area (Harrison Park) and surrounding properties. Source: Spatial Lands Viewer.

DEVELOPING PLAY OPPORTUNITIES IN HARRISON PARK

Everyone Can Play

The NSW Government has developed guidelines called 'Everyone Can Play' for designing play spaces which address equality and inclusivity. Underpinning these design guidelines is the ethos to create an inviting space that encourages and supports the local community to come together.

The three key principles of this guidelines are:

Can I get there? Can I play? and Can I stay?

Inclusion in Play

There has been a significant shift in the evolution of accessibility. For a good many years accessibility was about making playgrounds conform to AS1428. This was more an exercise in compliance than provision. This then evolved into making spaces more accessible, but with a view to also providing experience. For a very long time the focus of these efforts was particularly on wheelchair access and experience.

This, very slowly over time, evolved into wider provision. Whilst wheelchair access is a great measure of being able to get to places within the space, it does not necessarily make than space a destination for those with alternate disabilities.

The expansion of perception created a wider understanding of what could/should be incorporated in order to make access and experience for the broader community. It can still be revealing that we should be making provision for the seven senses, not five. Sound, smell, taste, hearing and sight are the commonly understood senses. However there are two more, and both are particularly pertinent to play space provision.

Vestibular explains the relationship of our body to gravity, movement and balance, i.e., acceleration, g-force, body movement and head position. For example, knowing where you are on a flying fox, or walking along a balance beam.

Proprioception is the sense of relative position of neighbouring parts of the body and the strength of effort employed in movement. This is important in order to understand where you body is in space and where we are positioned in order to plan and co-ordinate movement of body parts such as navigating through a narrow space, or being able to clap your hands with your eyes closed.

Both these "forgotten" senses are critical to consider when designing a play space.

Even though this concept still remains, the notion of accessibility has further evolved to become the notion of inclusion. This easiest way to describe this is that whilst accessibility is almost a measurable thing (ramp grade, door width, table heights, etc.), inclusion broadens the scope to not only consider whether a space is accessible internally, but whether it can be got to from the outside world. And it further considers not only internal accessibility, but it also consider s a breadth of provision to engage and afford experience for a diversity of disability. But further, furthermore, it also expands into the notion of inclusion in a more complete way in that the space needs to be welcoming not just in relation to disability but also to culture, all ages, all aspirations. It is basically positing the notion that all who come can get there from the outside, i.e., and much greater consideration of external connectivity (paths, ramps, crossings, public transport, parking, etc.), a much broader provision of play not just for physical activity for able bodied, and also a then notion of being able to stay for longer because of extra provision of comfort and facilities.

The level of provision for each play space will be relative to the "hierarchy" of the park, sometimes using older notions of local, district regional (or the like). Harrison Park, with it's central location, existing facilities and the lake would be likely to be considered a significant City Wide park with the highest level of provision of play and associated facilities. A showcase for how Shellharbour council sees itself into the future.



Urban Park Jesse Owens by Espace Libre



Nedre Foss Park by Norconsult

SITE ANALYSIS

Harrison Park Components

- 1. Youth Centre
- 2. Memorial
- 3. Retention Pond
- 4. Lawns
- 5. Carpark
- 6. Mature Native Vegetation



CONSULTATION ENGAGEMENT

Key Stakeholders

The objective of the community consultation process is to facilitate a dialogue between Shellharbour City Council and the public on the existing condition and future development of Harrison Park. To obtain a wide variety of community perspectives, Shellharbour City Council and the consultant team developed separate consultation methods for local residents and other key stakeholders.

Consultation for this project includes:

- Council web site “Let’s Chat” - Completed
- Direct stakeholder engagement - July
- Presentation to Council - Ongoing

Blackbutt Youth Centre

Our main focus is on providing a clean environment that local young people can access safely.

- PROGRAMS:
 - a. Drama Program: Mondays and Wednesdays, 3.30pm – 5pm
 - b. Games Afternoon: Tuesdays, 3.30pm – 5pm
 - c. Cooking Program: Thursdays, 3.30pm – 5pm

Council Workshop #1

OPPORTUNITIES

- Opportunity for multi-functional space facility, including skating, park-our, basketball. Refer to received memo 11.3.2 Feasibility of Skate Facility - Harrison Park Shellharbour City Centre - Update Report (11158050)
- Flooding boundary needs to be checked
- More trees, shade, seating desired to activate park
- Noted that commercial fitness operators use the site to run sessions
- War memorial is not an official war memorial, opportunity to broaden its usage to become a welcoming plaza. It is used annually to host Shellharbour Anzac Day ceremony
- Opportunity for educational area with the boardwalk /water edge.

CONSTRAINTS

- Landownership along western edge.
- Flooding boundary needs to be checked.
- Maintenance of the pond needs to be considered when suggesting boardwalks. Pond needs maintenance access
- Proposing fencing around the pond wetland, water quality can be poor at times

Council Workshop #2

OPPORTUNITIES

- Amenities building to be located into the masterplan
- Adjacent to community centre, space is used for outdoor movies and bands. Opportunity for extra plaza space terrace seating (Potential shift of slide to the north to support event space.
- Safety and security of playground in vicinity to pond. Opportunity to relocate the playground further away from the wetland.
- Opportunity for car park expansion
- Amenities potentially to be included near the blackbutt youth centre. Ideal location near sewer services. Potentially moved to Cygnet road.
- Entry point on east of carpark and exit on west side of carpark whilst removal of roundabout entry and exit point. (Option to have one entry/exit location on east side)

CONSTRAINTS

- Maintain access to the wetland for maintenance
- New lake entrance road trees along crest to be removed due to integrity of flood bank on northern side of park.
- Western side of park to be mass planted, due to irregular access to loading docks.
- Council to provide flooding contours for Harrison park, determining level of structure and other activity

COMMUNITY CONSULTATION

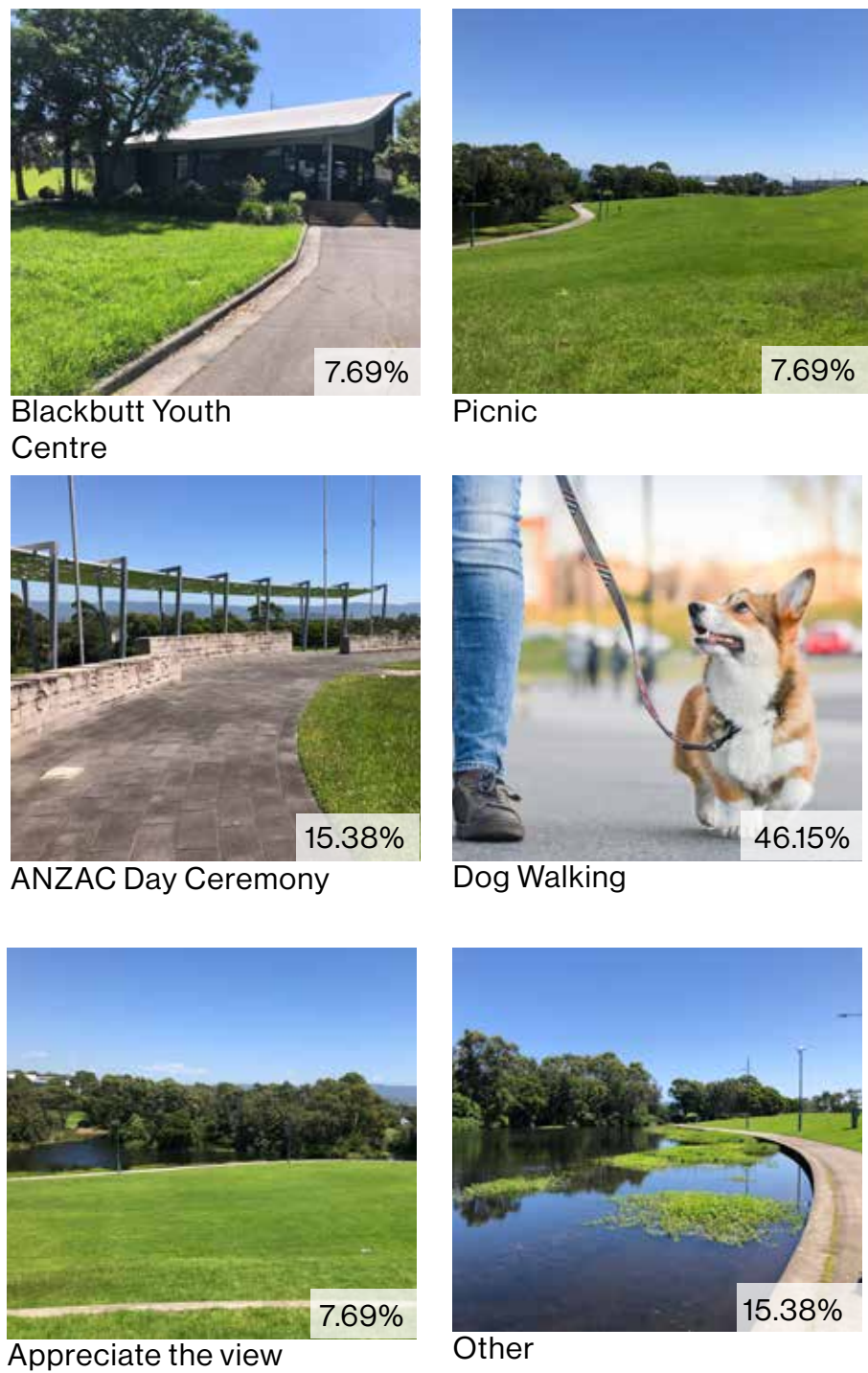
LET’S CHAT

Key Result

Let’s Chat is an online platform that Council uses to receive feedback. The summary of the engagement was based on the 15 visitors who provided responses.

- + 13 local resident
 - + 1 Casual visitor
 - + 1 Student
- The majority of the user visit the park at least once at week.
- Travel to:
- + Car 45.7%
 - + Walk 28.5%
 - + Ride a bike 14.3%
 - + Other 11.5

How the park is currently used?



COMMUNITY CONSULTATION

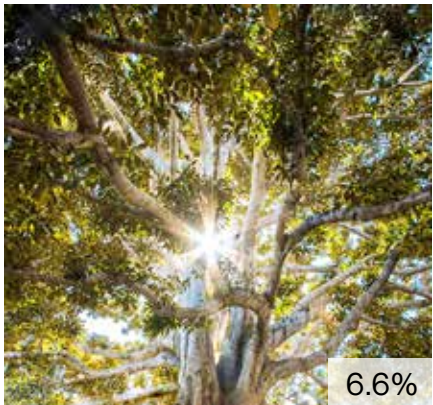
LET'S CHAT

What future project would you like to see?



Passive Open Space

5.8%



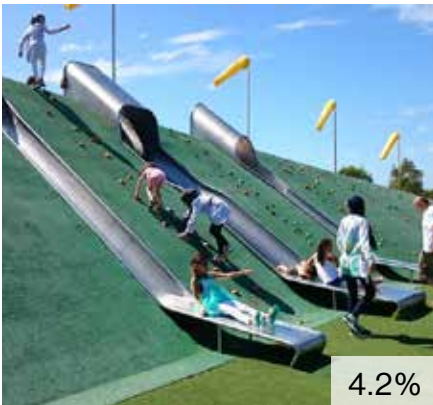
Appreciating Nature

6.6%



Community Garden

2.4%



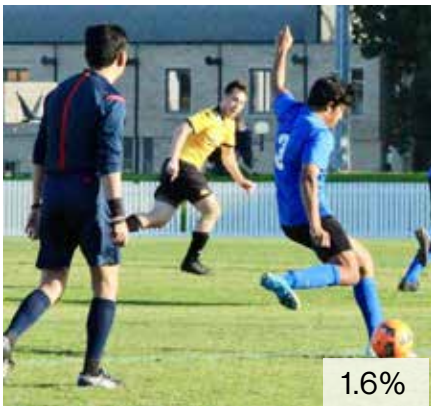
Play Space

4.2%



Passive Recreation

3.3%



Active Recreation

1.6%



Picnic

5.8%



Amenities

8.2%



Skate Park

9%



Shade Structure

5.8%



Gathering Space

11.5%



Multi-use courts

21.5%



Community Event

12.4%



Outdoor Fitness

1.7%





MASTERPLAN

02

HARRISON PARK MASTER PLAN



View to new play space

Artist impression

SITE OPPORTUNITIES PLAN

1. Play Space
2. Youth Zone
3. Existing Youth Centre / New outdoor space
4. Outdoor Fitness
5. Picnic Areas
6. Informal Stage with Terrace Seating
7. Refurbished Memorial
8. Park Signage & Entry Statement
9. Aquatic Bush-tucker Planting
10. Bird watching platform
11. Existing Carpark
12. Opportunity for car park expansion
13. Town Centre entry statement
14. Habitat fence
15. Opportunity for future connection to Shellharbour Civic Centre

LEGEND

Site

Existing Vegetation

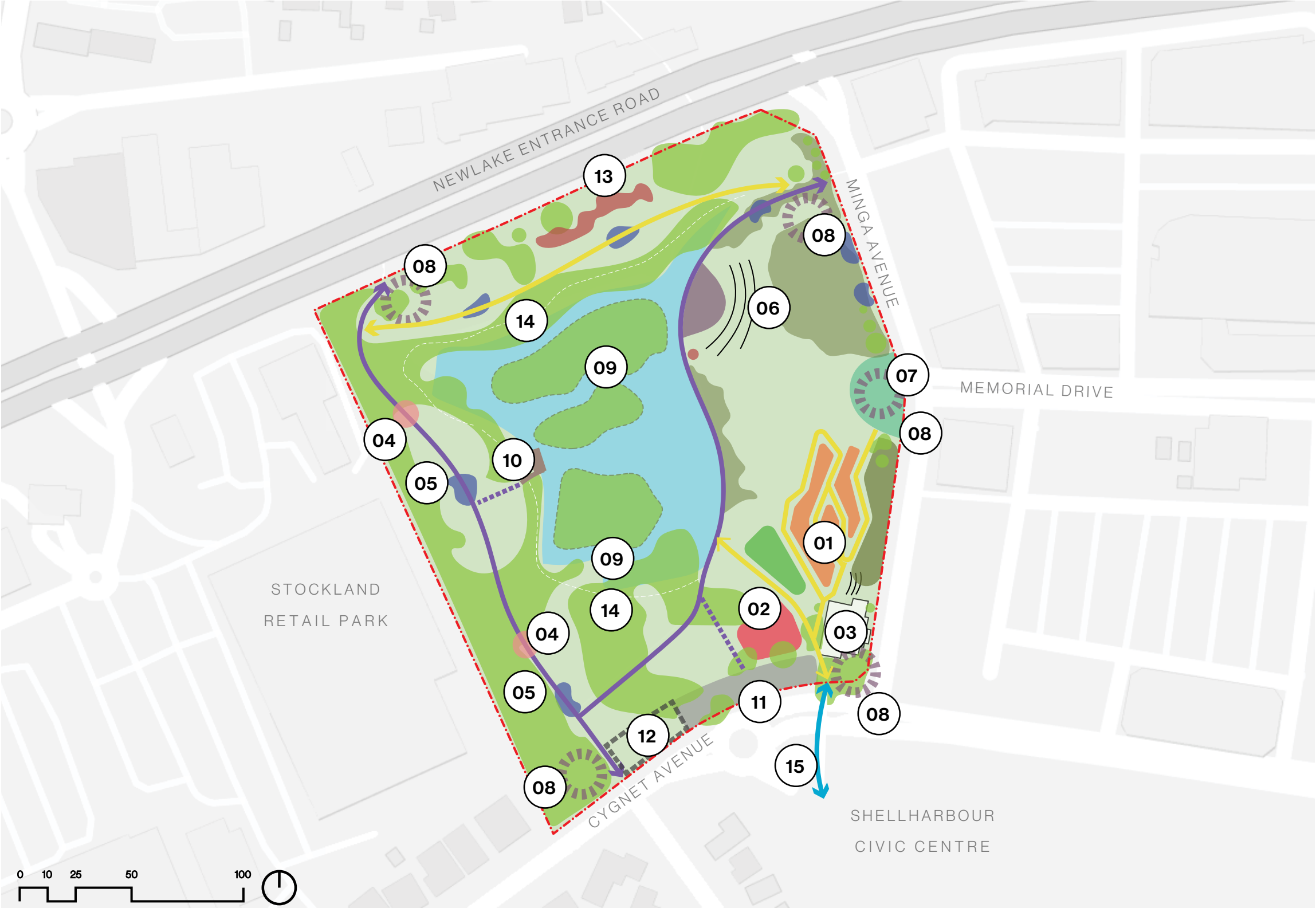
New Pedestrian Connection with Lighting

Existing Pedestrian Connection

Opportunity for future connection to Shellharbour Civic Centre

Public Art + Sculpture

Picnic Areas



LEGEND

- Existing Trees
- Proposed Trees
- Turf/Lawn
- Fitness Softfall
- Timber Decking
- Gravel
- Asphalt
- Concrete Road
- Play Softfall
- Water
- Sandstone Paving
- Cobblestone Paving
- Sports Surface
- Sandstone Path

KEY

- 1. Artwork Signage
- 2. Proposed Footpath
- 3. Sandstone Ampitheatre Seating
- 4. Proposed Market Space
- 5. Upgraded Memorial Space
- 6. Play spaces with informal access
- 7. Blackbutt Youth Centre
- 8. Seating Deck around Existing Trees
- 9. Multipurpose Area
- 10. Opportunity for Extended Carparking
- 11. BBQ / Picnic Tables
- 12. Turf Access to Pond
- 13. Bird Watching
- 14. Seating Area
- 15. Fitness Stations



HARRISON PARK CONCEPT

Project Name:
HARRISON PARK MASTERPLAN
Client: SHELLHARBOUR COUNCIL

Project No: 200739
Drawing no: 01
Rev: B
Date: 03.09.2021

Scale:
1:1500 @ A3
0 20 40 60 80m

North:
↑

GROUP SA

CONNECTIVITY & AMENITIES

Connectivity and Accessibility

The driving factor of the master plan is to increase the usability and accessibility of the park. Currently the park, and especially the western side is disconnected and there is not a true loop path around the wetland. The memorial is also reachable only along Minga Avenue and there is not accessible connection from the park.

The master plan proposes a series of new footpath links which will increase the connectivity, and provide a contiguous loop around the park.

The path connecting to the proposed play area is a meandering path to address the slope of the land whilst providing connection to the nodes of play.

The paths are designed for accessibility with grades of ramp that complies with the Australian Standard.

The master plan propose and highlight the opportunity for a new amenities block to be located along one of the new paths. The map shows two option for possible location of the amenities building that will need to be discussed with Council during the future stages of the project.

- LEGEND:
- Existing footpath
 - Proposed footpath
 - Proposed location for amenities building
 - Opportunity to incorporate the amenities with Blackbutt Youth Centre
 - Opportunity for future connection to Shellharbour Civic Centre



BLACKBUTT YOUTH CENTRE

The focus is on providing a clean environment that local young people can access safely.

Blackbutt Youth Centre is the main activator of the park on the day to day. In the future is envisaged that Council will investigate future opportunity to expand the centre with also the opportunity to incorporate public amenities.

The space surrounded the Blackbutt Youth Centre is thought as a flexible outdoor space that can allow for small to medium events, with a paved area nearby the north side of the park that creates opportunity for the centre to open into the park.

The yellow area represents the opportunity to create a visible statement and a formal entry from Cygnet street. A meeting space such as a large seating area within the existing tree can present a good opportunity in this regards.

On the western and north side of the centre the space for formal gathering and lounges where weekly classroom and activity can take place.

The centre is focused on young people and opportunity for active space should be explored in the future. The master plan propose a small area (in red) for basketball court and ping pong table.

The centre organises larger events that can take place in the flatter lawn area facing the wetland (red dashed on the map).

- LEGEND:
- Youth Centre Entry and seating
 - Outdoor space and gathering
 - Larger flexible outdoor space for event



Existing Youth Centre



Landmark - seating area

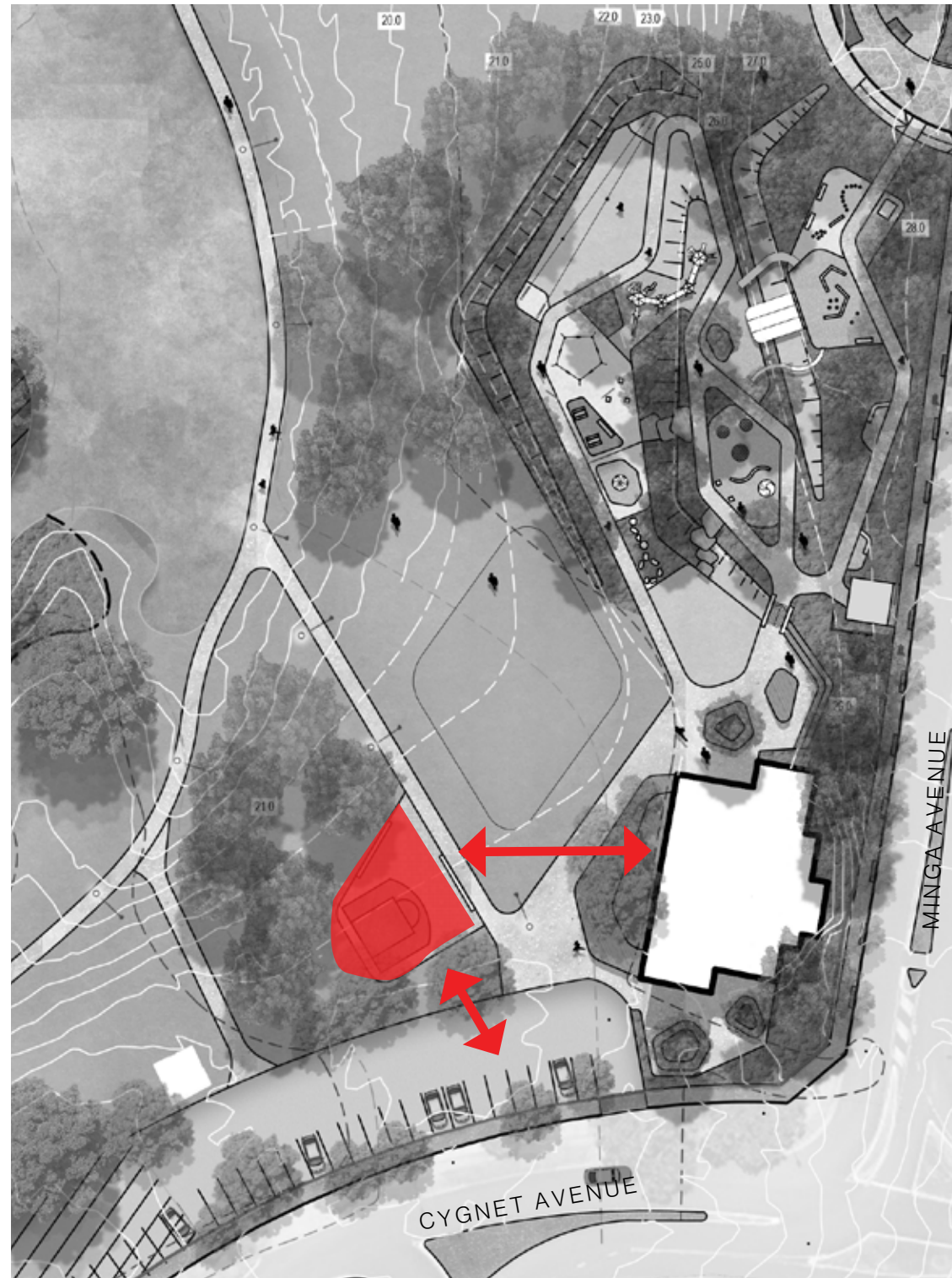
YOUTH AREA

A space for young users

The master plan includes an area with a youth focus which is centred around active sport and activity and social seating areas. The location is central and within viewing distance of the Youth Centre, play space, and car park to provide passive surveillance.

The activity:

- Half basketball court
- Ping pong tables
- footsall table
- Lounges and seating area for gathering space
- Direct connection with Youth Centre



JB Ware Reserve Glen Osmond



Ping pong table

PLAY SPACE

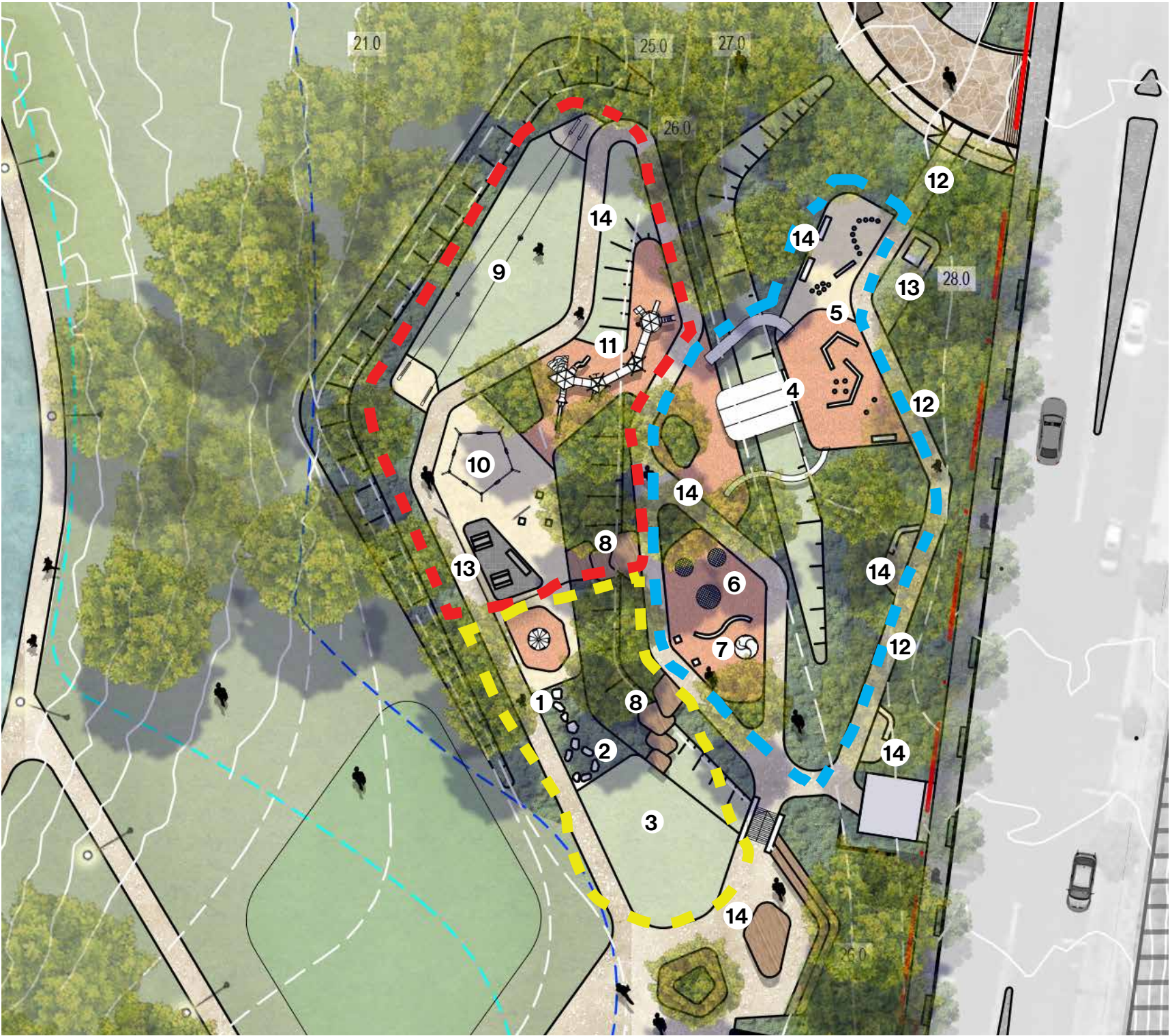
A playground that offers different challenges based on age and abilities. The play space is embedded into the natural slope of the site.

An accessible footpath connects the memorial plaza with the youth centre. The playground is carved into the landscape and follows the existing contours.

The embankment is designed as a series of terraces with planting, turf and rubber to address the main level change and create flat areas. Within the terraces, a diversity of play equipment is set to engage with all types of users. The area on the top of the slope provides slides and climbing activity on the rubber slope, with lounges and seating opportunities. The middle area is for older children with the greatest level of challenges. The lower portion of the playground, for the younger users. It has a more natural feeling with timber platforms and balance elements. This area connects with the plaza in front of the youth centre.

Advanced tree are proposed in the playground to create a cooler environment during the summer months and shade. Deciduous tree should be incorporated into the area to allow for winter sun.

- Young users: ■ ■ ■
 - 1. sandstone low climbing element
 - 2. sensorial path
 - 3. contained turf area
- Mid users: ■ ■ ■
 - 4. slides
 - 5. climbing and balance
 - 6. trampolines
 - 7. accessible spinner and rocker
 - 8. balance logs and timber platforms
- Older users: ■ ■ ■
 - 9. fly fox
 - 10. five way swings
 - 11. climbing tower
- Other
 - 12. sensorial trail
 - 13. lounges and shelter
 - 14. seating and lounges





Existing site



View location



View to new play space

Artist impression

Precedent images of play space elements which provide a diverse and exploratory setting including:

- flying fox,
- climbing tower,
- swings ,and
- mounded rubber surface areas.



FlyFox



Swing



Climbing tower



Softfall Rubber Mounds

Precedent images of play space elements which provide a diverse and exploratory setting including:

- slides built into sloping land,
- accessible carousel,
- natural play on stone steppers.



Embankment slide



Accessible spinner



Informal exploratory path



Slide, Structure, rubber slope and timber platform

WETLAND, VEGETATION & BIRD WATCHING PLATFORM

Harrison Park set the goal to achieve 40% canopy coverage.

The wetland is envisaged to be left almost untouched with the master plan. Access for maintenance is required to the border and the islands, to ensure safety and to promote an healthy grown of the existing vegetation as explained into the wetland management plan.

Opening views throughout the pond is also important to encourage a sense of safety for the user of the park walking along the western side.

A low habitat fence is proposed around the pond to discourage people to walk into the existing vegetation. A bird watching deck platform is proposed at the western edge of the wetland.

The bird watching platform and explanatory signage will encourage the user to understand and connect with the local fauna and flora.

Park tree planting

An extensive tree planting is proposed to the park and at the playground with a clear goal to achieve 40% of canopy coverage for the park as a whole in line with the most recent NSW Greener Spaces guidelines.

LEGEND:

— habitat fence

— vegetation care and maintenance

— extraordinary maintenance to existing tree to open views through the wetland

— bird watching platform

— Tree removal over crest of embankment to preserve stability

— heavily planted buffer to nearest property



Bird watching



Boardwalk

PICNIC AREA & MULTIPURPOSE AREA

Harrison Park facilitates activation all year round.

Whether a Sunday picnic or lunch break, the park provides a gateway into the nature at the heart of Shellharbour

Picnic areas are located on the western side of the park with the intent to activate and distribute the activity throughout the park.

The park hosts community event during the year. For large gatherings, the flattened lawn area with a small paved section at the north east end of the park serves as an informal stage to the sloped lawn which provides a perfect amphitheatre. This area is further defined with a series is seating walls set into the slope.

The promenade along the wetland is also proposed to become a space for market during the events in the park.

LEGEND:

– Picnic, BBQ and shelter

– Gathering space for event

– Market



Picnic areas



Gathering space

FITNESS CIRCUIT

Encouraging walking and activity

The main circulation path is activated with fitness stations which are suitable for all ages.

The new footpath creates a loop around the wetland of approximately 700m. Small inlay signs integrated into the paving can keep the user informed on the distanced walked.

The fitness equipment is proposed on the western side of the pond to support the strategy to activate this side of the wetland.



- LEGEND:
- Fitness station
 - Fitness loop



Jogging loop



Fitness equipment



Existing site



View of fitness station and picnic shelter on park loop path

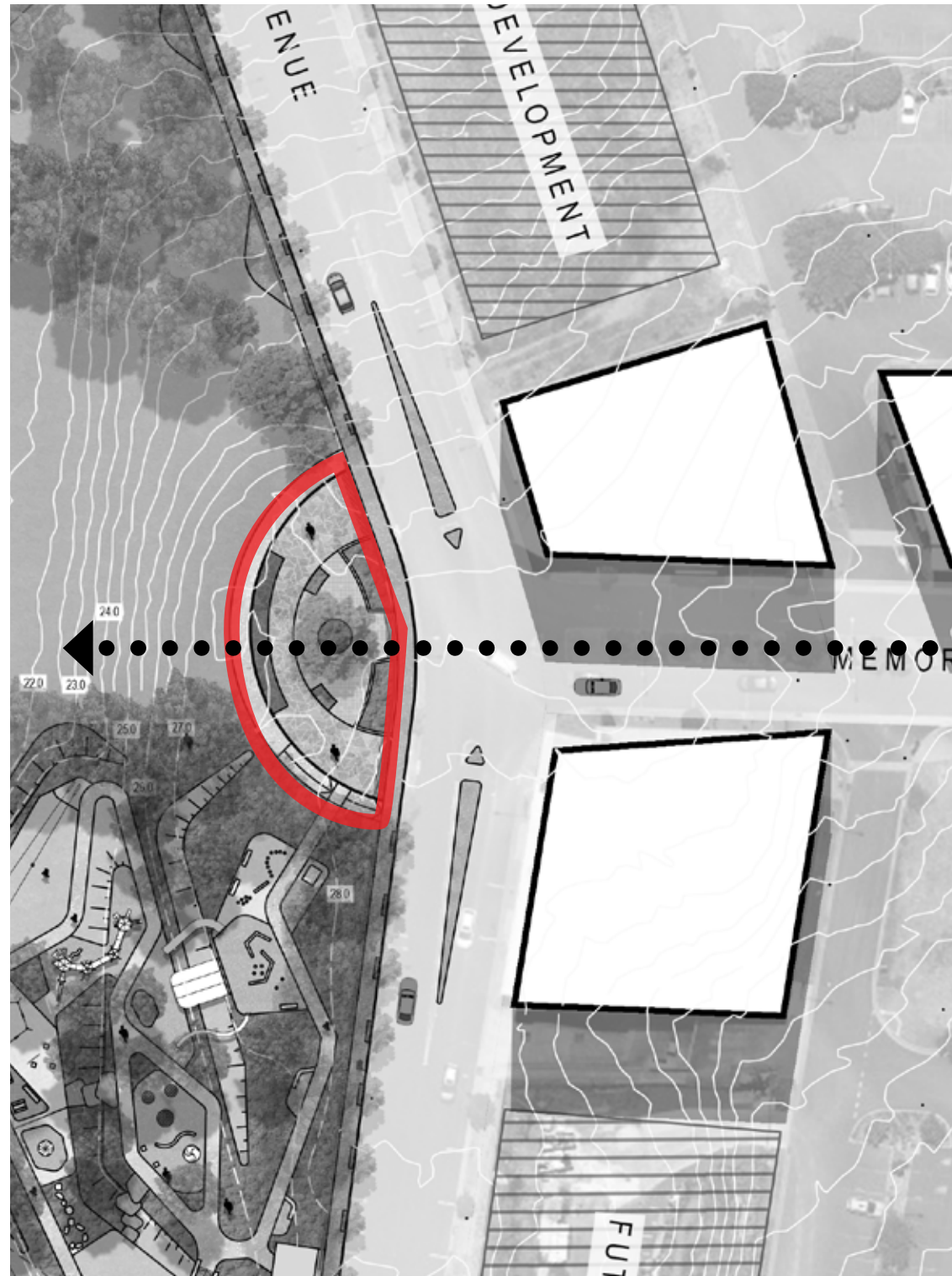
Artist impression

MEMORIAL PLAZA

The memorial plaza is located at the higher point of the park. This advantageous area is overlooking the park and out towards district views of the Illawarra Escarpment.

The plaza is used and known to host the ANZAC Day ceremony each year.

The masterplan propose small refurbishment to the area, with improved planting and seating.



Existing Memorial Plaza



ANZACDAY Ceremony

LAND ART & SIGNAGE

A new land art opportunity provides an entry statement for Harrison Park and Shellharbour City Centre

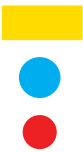
The New Lake Entrance Road is one of the main arterial roads entering Shellharbour. A high embankment along the north side of Harrison Park park impedes the views into and the presence of the Park.

A large art work is proposed at the north east corner to highlight the presence of the park and the Shellharbour City Centre.

The broader strategy of wayfinding signage is brought into the are with informative signage located at the main entry point and key area.

A second layer of interpretative signage is also proposed to enhance the connection between the user and the nature of the site.

- LEGEND:
- Art work
 - wayfinding signage
 - interpretative signage



Land art signage



Wayfinding signage at key location

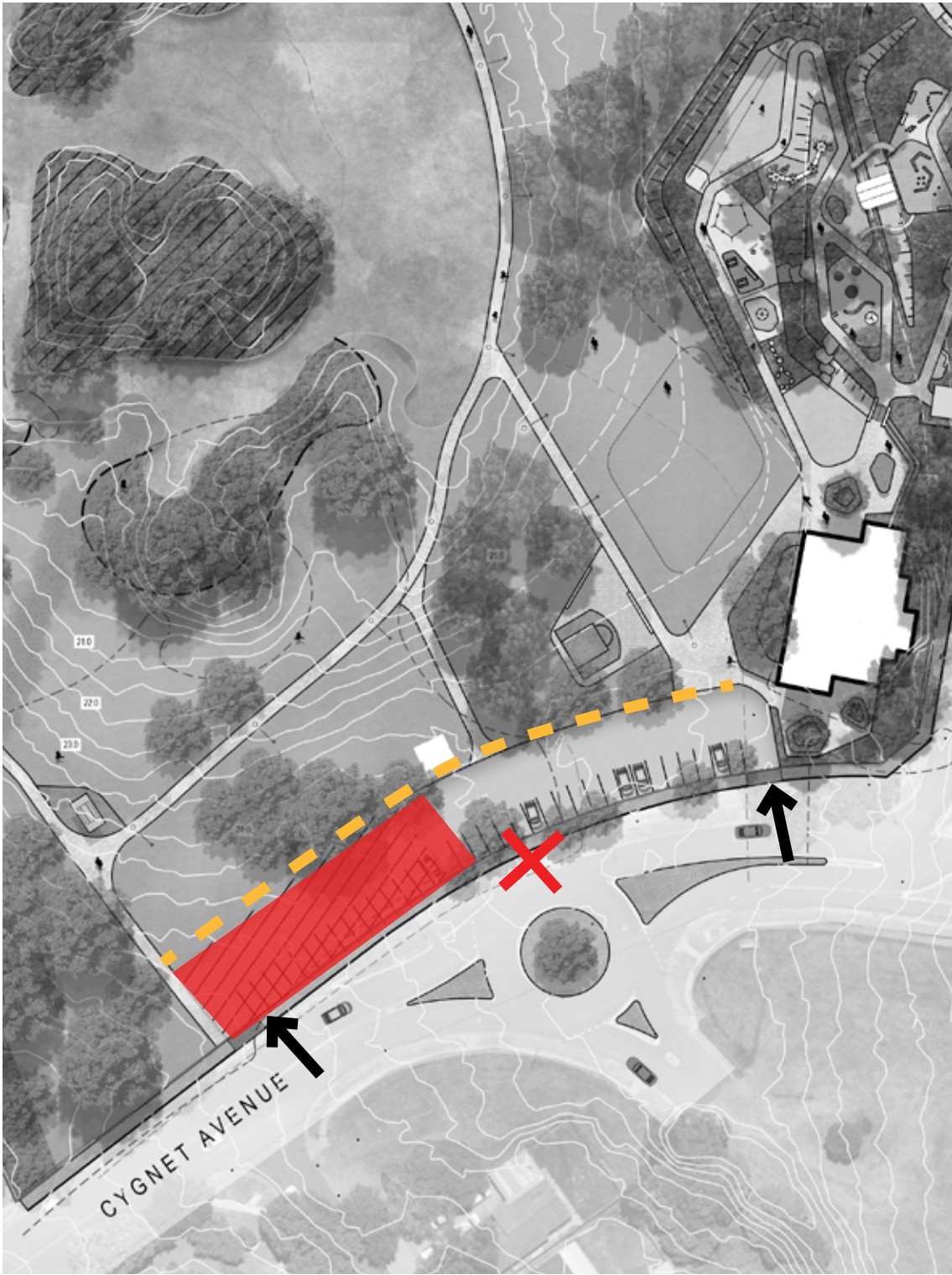
CAR PARK

The existing car park (17 car spaces) has two entry point along Cygnet Avenue one on the eastern side and the second from the roundabout.

The car park has opportunity to expand to the west. Additional parallel Parking can be also added along the North side with an addition of 15 car park spaces to meet future park demands.

To allow for the car park expansion the master plan proposes to relocate the central entry point from the roundabout to the eastern side with an in and out approach and additional exit point from the western side.

Further traffic studies will be required for the future stage of the project.



LEGEND:

– proposed additional car park

– proposed parallel parking

– proposed and existing entry

– removed existing entry

Existing Car Park

Additional tree shade.

Pg 38

Harrison Park Master Plan Report

Shellharbour City Council

LIGHTING STRATEGY

Pedestrian Lighting

Existing lighting along the main footpath are recommended to be changed to more sustainable LED in the future when due for renewal. New pedestrian and shared path lighting is proposed along primary routes within the precinct to enable and encourage safe use after dark.

General principles for lighting include:

- Light specification to minimize light spill beyond pathways, roads or fields, particularly into residential properties
- Lighting levels to Australian Standards

Car Park Lighting

Solar lighting-could be considered for the car park and the future redevelopment.

Car park lighting is to be designed to minimise light spill and may include provision of timers to allow automatic control of light after certain hours.

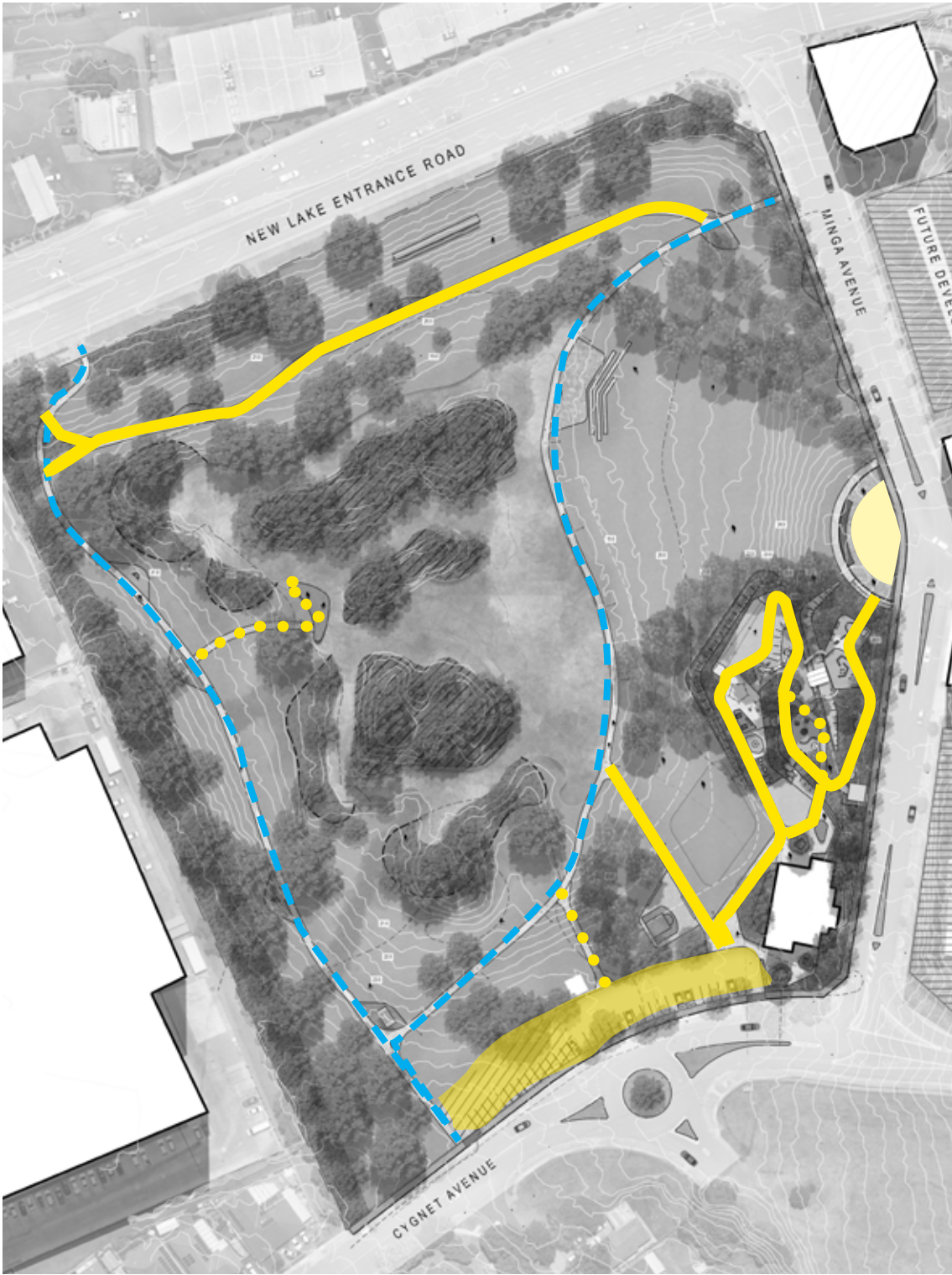
LEGEND:

– Existing lighting

– proposed main footpath lighting

– proposed secondary footpath lighting

– car park lighting



LED path lighting



Feature LED Lighting

STAGING AND IMPLEMENTATION

It is proposed to develop Harrison Park in two main stages.

The options identified in the master plan will be subject to detailed design and funding. The options and recommendations will be prioritised in accordance with this staging plan, and incorporated into Council's Long Term Financial Plan, Delivery Plan and Operational plan.

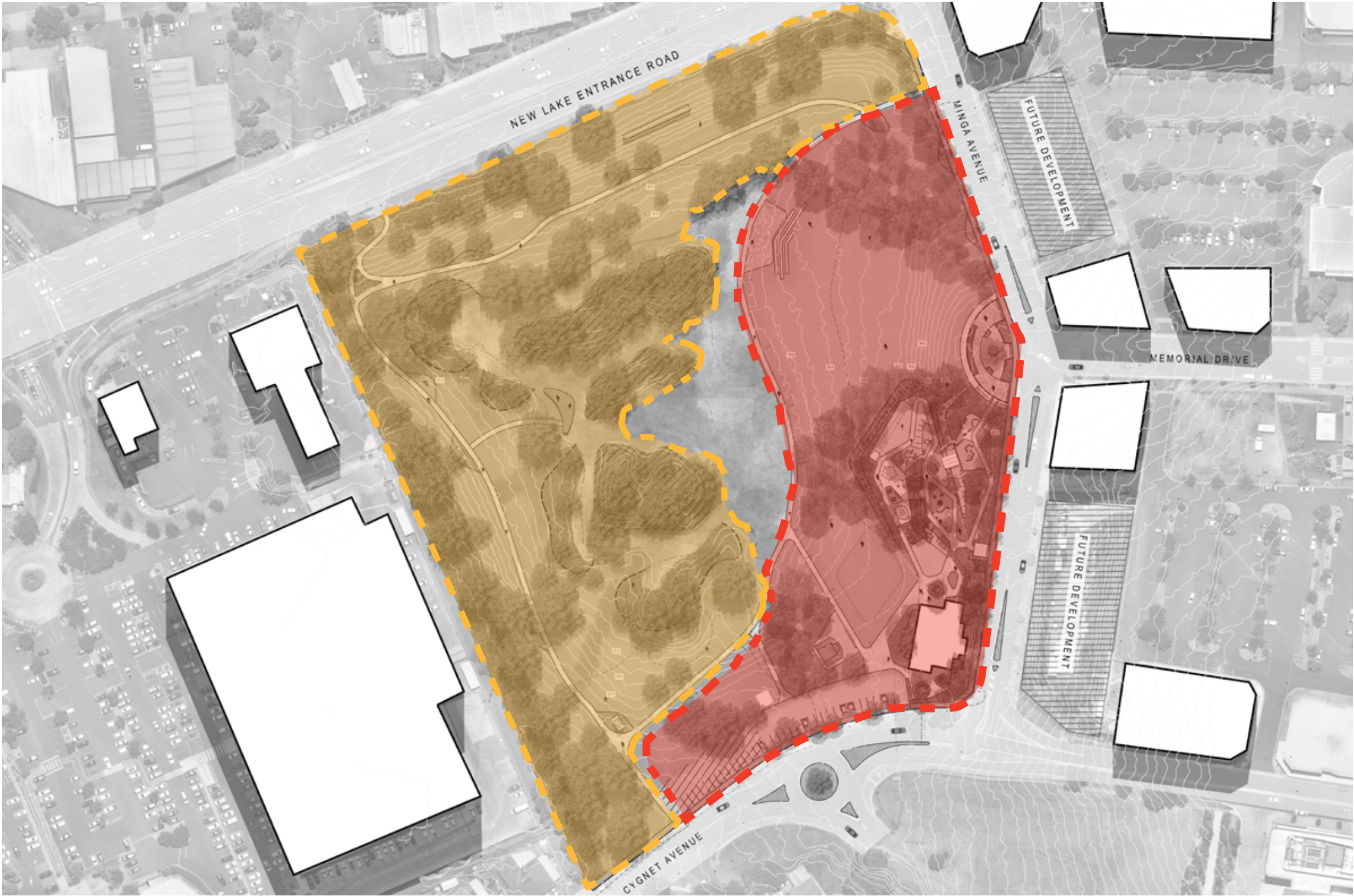
The main focus for Stage 1 works is to develop the connectivity and the circulation of the park including the additional footpath, picnic area, shelter and fitness area. Wayfinding signage also are proposed to be part of the first stage of development. The first stage should aim to enhance the existing characteristic of the park, provide a new accessible loop around the park and activate the western edge that at the moment it result disconnected. As part of the first stage of works initial wayfinding signage could also be place to enhance the existing characteristic of the park.

Stage 2 is more focus to the east side of the park with the new playground, gathering and potentially the renewal of the existing Blackbutt Youth Centre.

Generally, the proposed additional tree planting and lighting would best to follow the nearest stage.

LEGEND:

- STAGE 1
- STAGE 2



CONCLUSION

This Master Plan document has been prepared with the aim of providing a robust and flexible plan to guide the future of Harrison Park. The document is intended to guide future decisions on planning and development including facility upgrades, park uses, remediation strategies and planting.

The priority of the actions proposed in the staging and implementation strategy need to be reviewed and developed over time as the needs of the community change.

SYDNEY

Level 7, 80 William Street
East Sydney NSW 2011
Australia

MELBOURNE

Level 1, 104 Exhibition Street
Melbourne VIC 3000
Australia

BRISBANE

Level 14, 100 Edward Street
Brisbane QLD 4000
Australia

PERTH

Level 2, 307 Murray Street
Perth WA 6000
Australia

SHANGHAI

Room 407, No. 71, Xi Suzhou Road Jingan District
Shanghai 200041
PR China

HO CHI MINH CITY

19th Floor – Havana Tower, 132 Ham Nghi,
Ben Thanh Ward, District 1, Ho Chi Minh City
Vietnam