

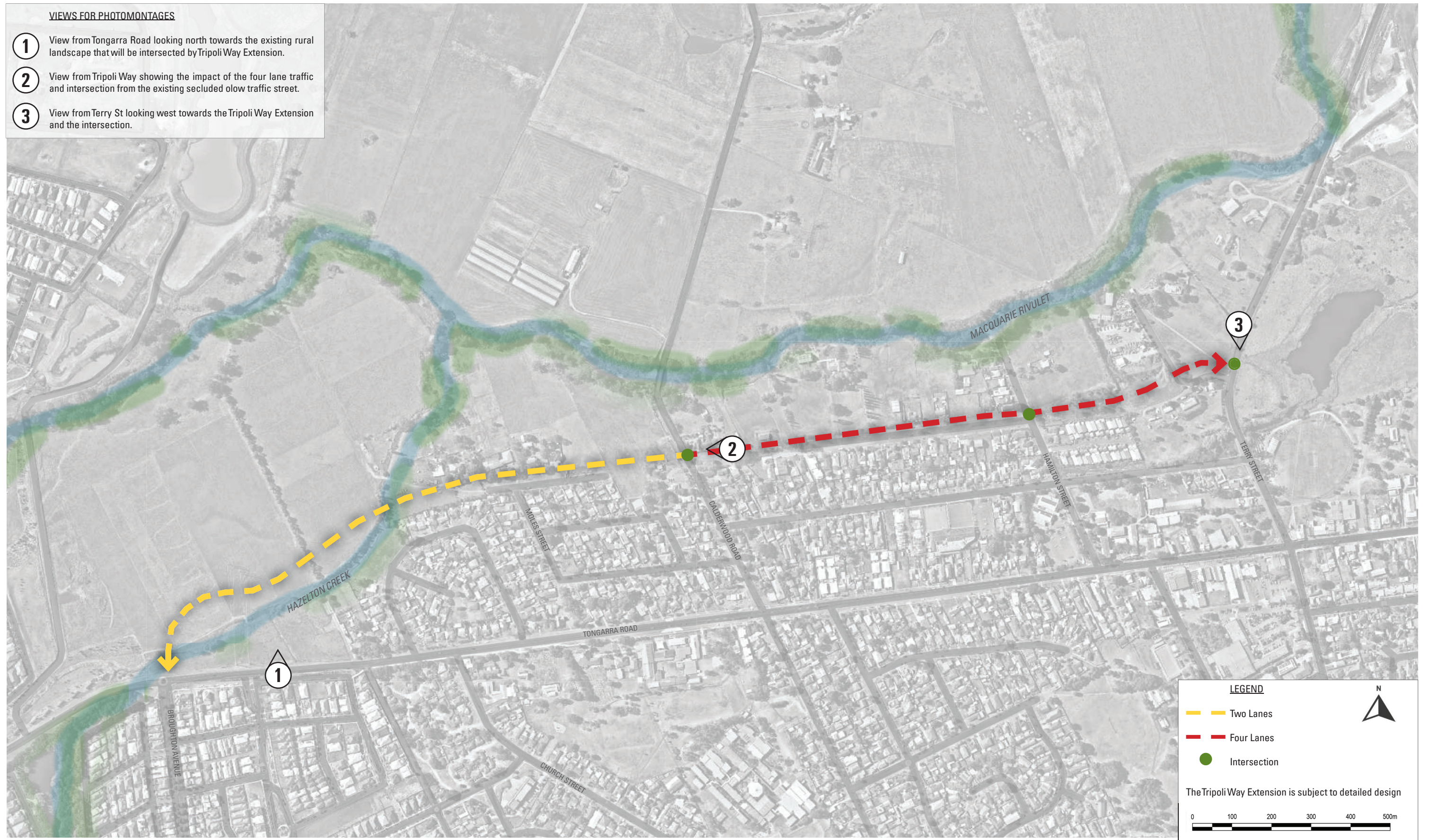
APPENDIX

M

PHOTOMONTAGES

VIEWS FOR PHOTOMONTAGES

- 1 View from Tongarra Road looking north towards the existing rural landscape that will be intersected by Tripoli Way Extension.
- 2 View from Tripoli Way showing the impact of the four lane traffic and intersection from the existing secluded slow traffic street.
- 3 View from Terry St looking west towards the Tripoli Way Extension and the intersection.



VIEW POINT KEY PLAN



BEFORE (EXISTING CONDITIONS)- LOOKING NORTH TOWARD THE EXISTING RURAL LANDSCAPE TO BE INTERSECTED BY TRIPOLI WAY EXTENSION



AFTER (ARTIST IMPRESSION)- LOOKING NORTH TOWARD THE EXISTING RURAL LANDSCAPE TO BE INTERSECTED BY TRIPOLI WAY EXTENSION

VIEW 1- BEFORE AND AFTER PHOTOMONTAGE



BEFORE (EXISTING CONDITIONS)- LOOKING WEST ONTRIPOLI WAYTOWARDSTHE CALDERWOOD ROAD INTERSECTION



AFTER (ARTIST IMPRESSION)- LOOKING WEST ONTRIPOLI WAYTOWARDSTHE CALDERWOOD ROAD INTERSECTION

VIEW2- BEFORE AND AFTER PHOTOMONTAGE



BEFORE (EXISTING CONDITIONS)- LOOKING SOUTH ON TERRY STREET TOWARDS INTERSECTION WITH TRIPOLI WAY



AFTER (ARTIST IMPRESSION)- LOOKING SOUTH ON TERRY STREET TOWARDS INTERSECTION WITH TRIPOLI WAY

VIEW 3- BEFORE AND AFTER PHOTOMONTAGE