

MY PLACE, MY COMMUNITY

Albion Park/Tullimbar

POPULATION^{1,2}
15,666

20.5%

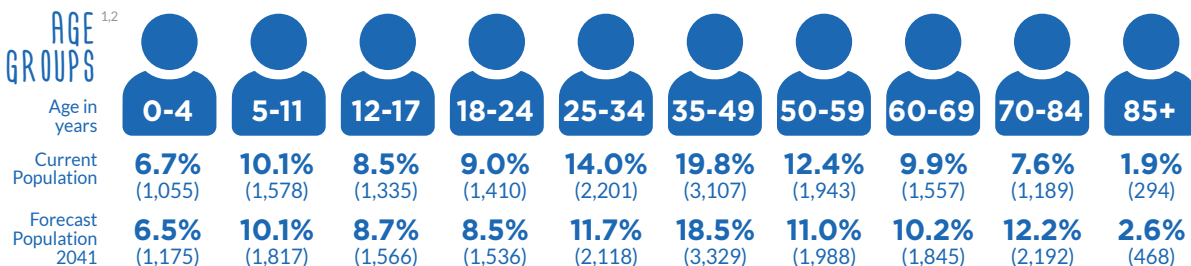
of the Shellharbour LGA

FORECAST POPULATION 2041

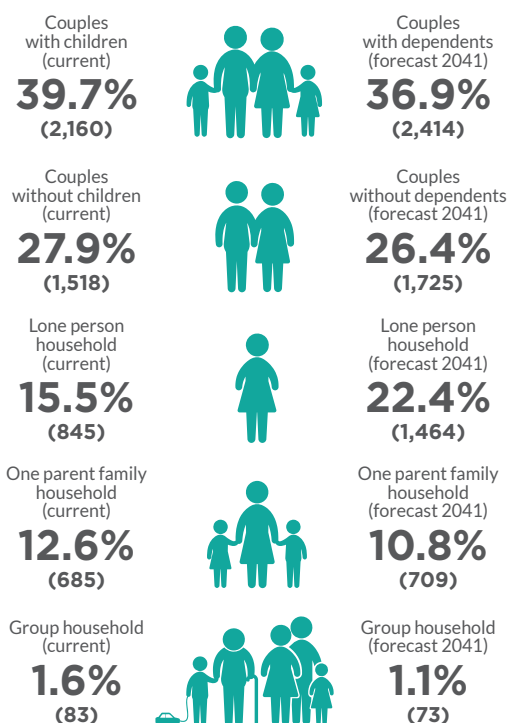
18,036

17.5%
of the Shellharbour LGA

AGE GROUPS^{1,2}



HOUSEHOLDS^{1,2}



AUSTRALIAN EARLY DEVELOPMENT CENSUS⁶

(explores development across a number of domains, including: physical, social, emotional, language and communication)

Vulnerable on two or more domains
4.5%



Low income households¹
17.5%
(824)

Households with no car¹
2.7%
(144)

Homelessness population¹
20
(SA2 - Albion Park - Macquarie Pass)

SEIFA - Level of disadvantage¹

1,022

Index of Socio-educational advantage⁷

1,051
(average is 1000)

DIVERSITY & INCLUSION¹



Aboriginal and Torres Strait Islander Population
4.4%
(692)



Overseas born
12.4%
(1,947)



Language spoken at home other than English
5.9%
(918)



Need for assistance (due to disability)
5.9%
(929)

CRIME⁵



- Below NSW rate
- Above NSW rate
- 5 year trend decreasing
- 5 year trend increasing
- 5 year trend stable

* Trend information is not calculated if at least one 12-month period in the selected timeframe had less than 20 incidents

Assault ● ↓
Homicide ● *
Robbery ● *
Sexual offences ● *
Theft ● —
Malicious damage ● ↓
Against justice procedures ● —
Disorderly conduct ● *
Drug offences ● *

EMPLOYMENT

includes Calderwood area

Unemployment rate¹
3.3%
(266)

Volunteering¹
10.2%
(1,119)

Number of jobs⁴
2,465
(13.3% of the region)

Labour force¹ participation rate
66.1%
(8,170)
population in labour force 15+

TOP 3 EMPLOYMENT INDUSTRIES⁴



Education and training
26%
(641 jobs)



Health care and social assistance
18.4%
(453 jobs)



Construction
10.6%
(262 jobs)

includes Calderwood area



Economic output
\$694.8M
12.7%
of total economic output for the region

FEELING SAFE³

Estimated number of people aged 18 years and over who feel safe walking alone in local area after dark

4,953
(47.4 Age Standardised Rate per 100)**
(SA2 - Albion Park - Macquarie Pass)

HEALTH³



One of the most disadvantaged areas in NSW in terms of:
• Total admissions to public hospitals
(SA2 - Albion Park - Macquarie Pass)

Population with at least one long-term health condition
36.3%

Long-term health conditions

• Arthritis 9.6% ●	• Heart disease 3.2% ●	• Below NSW rate
• Asthma 9.2% ●	• Kidney disease 1.0% —	• Above NSW rate
• Cancer 2.6% ●	• Lung condition 1.9% ●	• Same as NSW rate
• Dementia 0.4% ●	• Mental health condition 10.6% ●	
• Diabetes 4.7% ●	• Stroke 0.9% —	

** An age standardised rate is a summary measure of the rate that a population would have if it had a standard age structure.

1 Australian Bureau of Statistics, Census of Population and Housing, 2016 and 2021
2 Population and household forecasts, 2016 to 2041, prepared by .id

3 PHIDU Social Health Atlas
4 REMPLAN, 2022

5 NSW Bureau of Crime Statistics and Research
6 Australian Early Development Census, 2021

7 Australian Curriculum, Assessment and Reporting Authority, 2021. My School
8 Shellharbour Connect website

MY PLACE, MY COMMUNITY

Albion Park Tullimbar

also includes
Calderwood area

Natural Assets
Macquarie Park
National Park

 **Social Infrastructure, Assets & Community facilities**

- Centenary Hall
- Albion Park Community Centre
- Albion Park Library
- Albion Park Pool/Swimming Centre
- HACC Centre
- Calderwood Community Centre/Sprout Hub
- Albion Park Baby Health Centre
- Albion Park Skate Park

 **Parks, Reserves, Recreation, Attractions**

- Albion Park Showground
- Con O'Keefe Park
- Terry Reserve
- Centenary Park
- Fraser's Reserve
- Calderwood District Park
- Calderwood Valley Golf Course
- Mood Park

 **Natural Assets**

- Macquarie Park National Park

 **Business Precincts**

- Albion Park Town Centre
- Terry Street shops
- Regal Heights shops


 **Education facilities**

- 2 x Private High Schools
- 1 x Public High School
- 3 x Public Primary Schools
- 1 x Christian School (K-12)


 **Places of Worship**
5


 **Aged Care Facility**
1


 **Retirement Living**
1

 **Development**
Calderwood


 Social Infrastructure, Assets & Community facilities

 Natural assets


 Business Precinct

 Places of Worship

 Proposed Development

 Parks, Reserves, Recreation, Attractions

 Education Facilities

 Aged Care Facility

 Retirement Living

