

MY PLACE, MY COMMUNITY

Barrack Heights

POPULATION^{1,2}
5,373

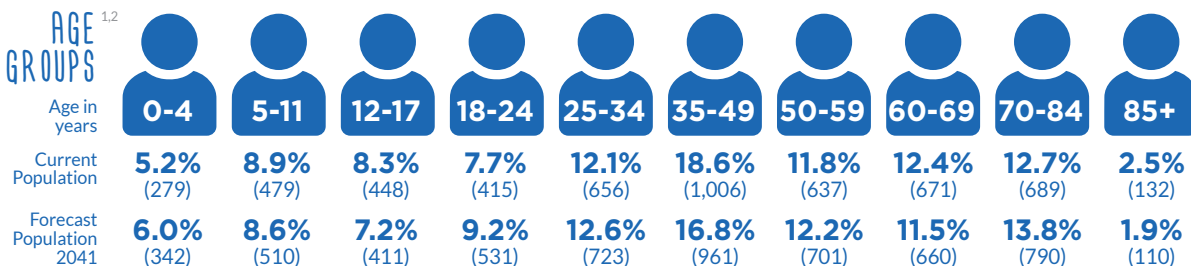
7.0%

of the Shellharbour LGA

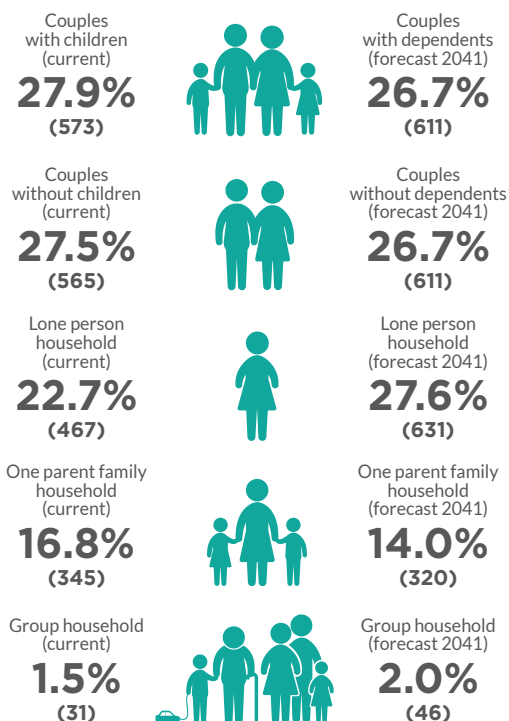
FORECAST POPULATION 2041
5,738
5.6%
of the Shellharbour LGA

Note: The forecast population area includes Rural West, which also encompasses some of the Dunmore area.

AGE GROUPS^{1,2}



HOUSEHOLDS^{1,2}



AUSTRALIAN EARLY DEVELOPMENT CENSUS⁶

(explores development across a number of domains, including: physical, social, emotional, language and communication)

Vulnerable on two or more domains
20.9%



Low income households¹
27.7%
(551)

Households with no car¹
7.0%
(144)

Homelessness population¹
77
(SA2 - Warilla)

SEIFA - Level of disadvantage¹

931.9

Index of Socio-educational advantage⁷

920
(average is 1000)

DIVERSITY & INCLUSION¹



Aboriginal and Torres Strait Islander Population
6.3%
(335)



Overseas born
18.9%
(1,004)



Language spoken at home other than English
13.5%
(724)



Need for assistance (due to disability)
8.5%
(462)

CRIME⁵



- Below NSW rate
- Above NSW rate
- 5 year trend decreasing
- 5 year trend increasing
- 5 year trend stable

* Trend information is not calculated if at least one 12-month period in the selected timeframe had less than 20 incidents

Assault ● —
Homicide ● *
Robbery ● *
Sexual offences ● *
Theft ● —
Malicious damage ● —
Against justice procedures ● *
Disorderly conduct ● *
Drug offences ● *

EMPLOYMENT

Unemployment rate¹
5.0%
(116)

Number of jobs⁴
845
(4.6% of the region)

Volunteering¹
7.9%
(346)

Labour force¹ participation rate
52.8%
(2,321)
population in labour force 15+

TOP 3 EMPLOYMENT INDUSTRIES⁴



Education and training
32.4%
(274 jobs)



Health care and social assistance
17.0%
(144 jobs)



Construction
12.9%
(109 jobs)



Economic output
\$224.2M
4.1%
of total economic output for the region

FEELING SAFE³

Estimated number of people aged 18 years and over who feel safe walking alone in local area after dark

5,730
(35.9 Age Standardised Rate per 100)**
(SA2 - Warilla)

HEALTH³



One of the most disadvantaged areas in NSW in terms of:

- Aged care and disability
- Immunisation - HPV
- Bowel screening outcomes
- Chronic disease and conditions (diabetes, circulatory system diseases)
- Self-assessed health
- Psychological distress
- Health risk factors such as smoking and obese children
- Premature mortality rate

(SA2 - Warilla)

Long-term health conditions

- Arthritis 12.7% ●
- Asthma 9.0% ●
- Cancer 3.1% ●
- Dementia 0.8% —
- Diabetes 6.6% ●
- Heart disease 4.7% ●
- Kidney disease 1.2% ●
- Lung condition 2.9% ●
- Mental health condition 11.3% ●
- Stroke 1.2% ●

- Below NSW rate
- Above NSW rate
- Same as NSW rate

Population with at least one long-term health condition
37.9%

** An age standardised rate is a summary measure of the rate that a population would have if it had a standard age structure.

1 Australian Bureau of Statistics, Census of Population and Housing, 2016 and 2021
2 Population and household forecasts, 2016 to 2041, prepared by .id

3 PHIDU Social Health Atlas
4 REMPLAN, 2022

5 NSW Bureau of Crime Statistics and Research
6 Australian Early Development Census, 2021

7 Australian Curriculum, Assessment and Reporting Authority, 2021. My School
8 Shellharbour Connect website

MY PLACE, MY COMMUNITY

Barrack
Heights









 **Social Infrastructure,
Assets & Community facilities**
Community Garden

 **Parks, Reserves,
Recreation, Attractions**
Barrack Heights Sportsfield
Jock Brown Sportsfield
Wattle Road Reserve

 **Business Precincts**
Captain Cook Drive shops
Sunset Avenue Industrial area

 **Education facilities**
1 Public Primary School
1 Public High School

 **Hospital**
Shellharbour Private Hospital

- | | |
|--|---|
|  Social Infrastructure,
Assets & Community facilities |  Parks, Reserves,
Recreation, Attractions |
|  Natural assets |  Education Facilities |
|  Business Precinct |  Aged Care Facility |
|  Places of Worship |  Retirement Living |

