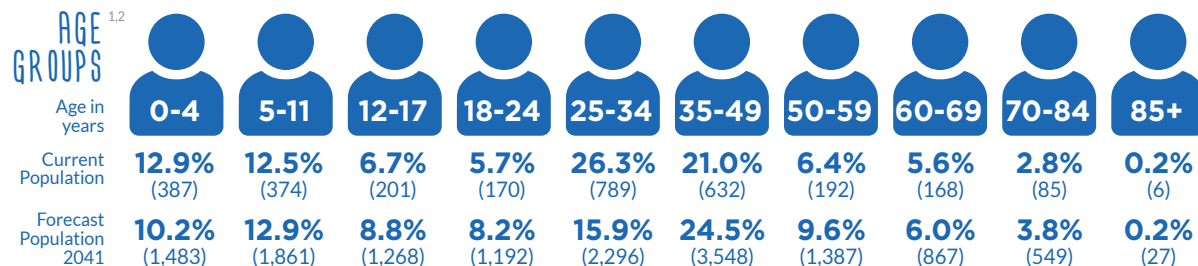
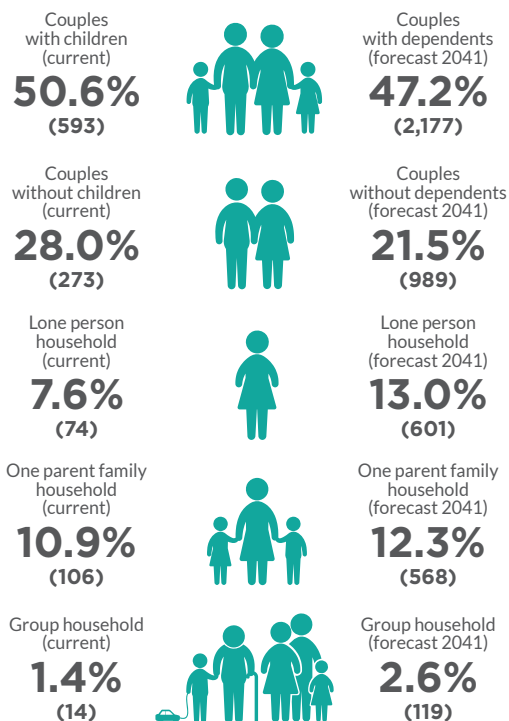


# MY PLACE, MY COMMUNITY

## Calderwood



### HOUSEHOLDS



### AUSTRALIAN EARLY DEVELOPMENT CENSUS

(explores development across a number of domains, including: physical, social, emotional, language and communication)

Vulnerable on two or more domains  
**8.2%**



SEIFA - Level of disadvantage

**1081**

Low income households  
**6.1%** (60)

Households with no car  
**1.0%** (10)

Homelessness population  
**77** (SA2 - Warilla)

Index of Socio-educational advantage

**909** (average is 1000)

### DIVERSITY & INCLUSION



Aboriginal and Torres Strait Islander Population  
**4.5%** (137)



Overseas born  
**13.8%** (416)



Language spoken at home other than English  
**10%** (301)



Need for assistance (due to disability)  
**3.8%** (113)

### CRIME



NO CRIME DATA IS AVAILABLE FOR CALDERWOOD AT THIS STAGE

- Below NSW rate
- Above NSW rate
- 5 year trend decreasing
- 5 year trend increasing
- 5 year trend stable

\* Trend information is not calculated if at least one 12-month period in the selected timeframe had less than 20 incidents

### EMPLOYMENT

includes Rural West area

Unemployment rate<sup>1</sup>  
**1.9%** (32)

Volunteering  
**8.4%** (180)<sup>1</sup>

Number of jobs<sup>4</sup>  
**365** (1.97% of the region)

Labour force<sup>1</sup> participation rate  
**79%** (1,691)  
population in labour force 15+

### HIGHEST EMPLOYMENT INDUSTRY



Education and training  
**28.7%** (105 jobs)

includes Rural West area



Economic output  
**\$138.6M**  
**2.5%** of total economic output for the region

### FEELING SAFE

Estimated number of people aged 18 years and over who feel safe walking alone in local area after dark

**4,953**

(47.4 Age Standardised Rate per 100)\*\*  
(SA2 - Albion Park-Macquarie Pass)

### HEALTH



One of the most disadvantaged areas in NSW in terms of:  
• Total admissions to public hospitals  
(SA2 - Albion Park-Macquarie Pass)

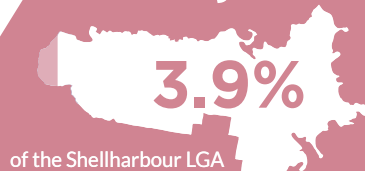
Population with at least one long-term health condition  
**26.7%**

Long-term health conditions

- Arthritis 4.8%
- Asthma 9.3%
- Cancer 1.7%
- Dementia 0.4%
- Diabetes 2.0%
- Heart disease 1.5%
- Kidney disease 0.7%
- Lung condition 0.6%
- Mental health condition 8.4%
- Stroke 0.4%

- Below NSW rate
- Above NSW rate
- Same as NSW rate

POPULATION<sup>1,2</sup>  
**3,013**



FORECAST POPULATION 2041

**14,478**

**14.1%** of the Shellharbour LGA

Note: The forecast population area includes Rural West, which also encompasses some of the Dunmore area.

\*\* An age standardised rate is a summary measure of the rate that a population would have if it had a standard age structure.

1 Australian Bureau of Statistics, Census of Population and Housing, 2016 and 2021  
2 Population and household forecasts, 2016 to 2041, prepared by .id

3 PHIDU Social Health Atlas  
4 REMPLAN, 2022

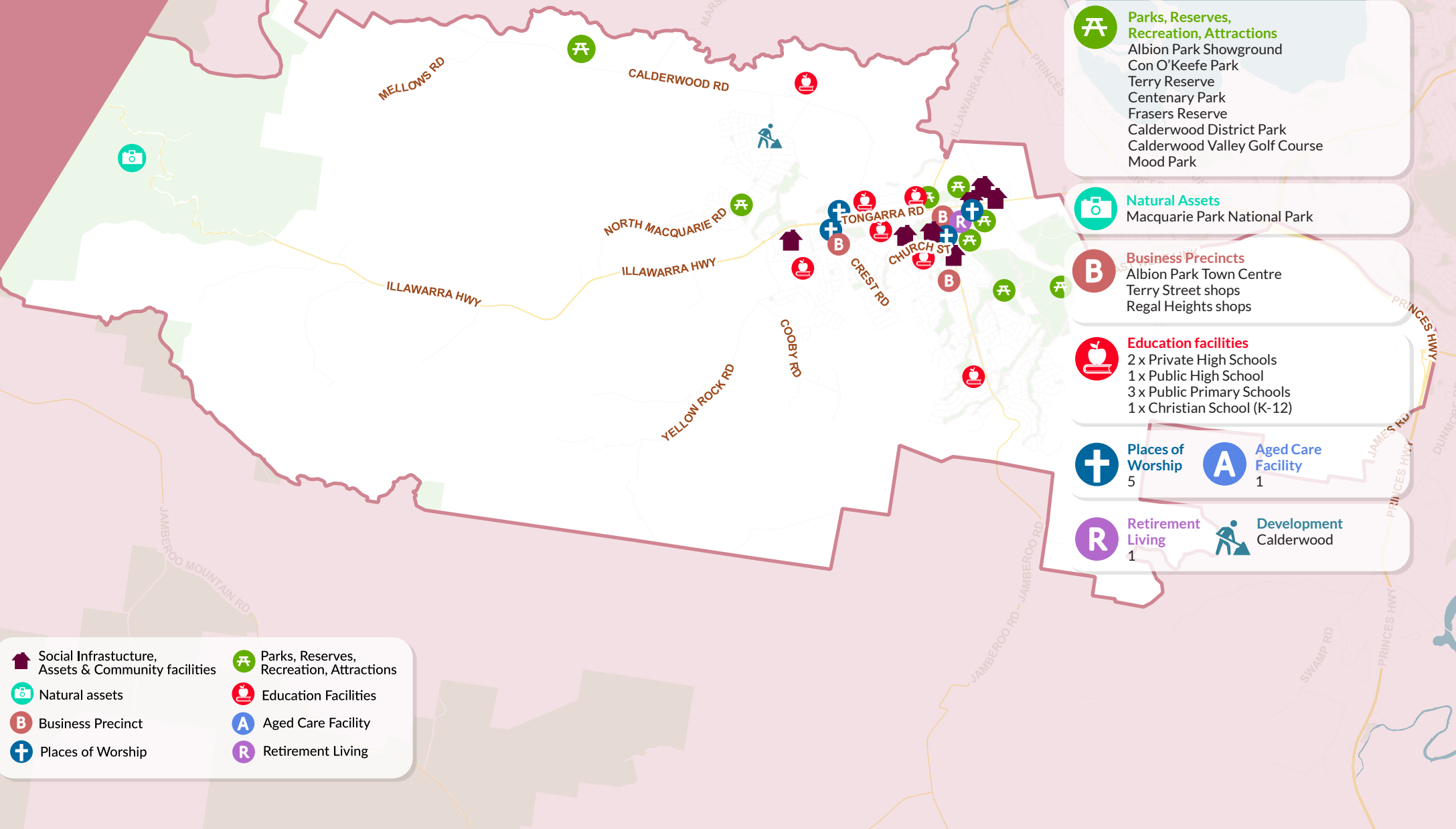
5 NSW Bureau of Crime Statistics and Research  
6 Australian Early Development Census, 2021

7 Australian Curriculum, Assessment and Reporting Authority, 2021. My School  
8 Shellharbour Connect website

# MY PLACE, MY COMMUNITY

## Albion Park Tullimbar

also includes  
Calderwood area



**Social Infrastructure, Assets & Community facilities**

- Centenary Hall
- Albion Park Community Centre
- Albion Park Library
- Albion Park Pool/Swimming Centre
- HACC Centre
- Calderwood Community Centre/Sprout Hub
- Albion Park Baby Health Centre
- Albion Park Skate Park

**Parks, Reserves, Recreation, Attractions**

- Albion Park Showground
- Con O'Keefe Park
- Terry Reserve
- Centenary Park
- Fraser's Reserve
- Calderwood District Park
- Calderwood Valley Golf Course
- Mood Park

**Natural Assets**

- Macquarie Park National Park

**Business Precincts**

- Albion Park Town Centre
- Terry Street shops
- Regal Heights shops

**Education facilities**

- 2 x Private High Schools
- 1 x Public High School
- 3 x Public Primary Schools
- 1 x Christian School (K-12)

**Places of Worship** 5

**Aged Care Facility** 1

**Retirement Living** 1

**Development** Calderwood