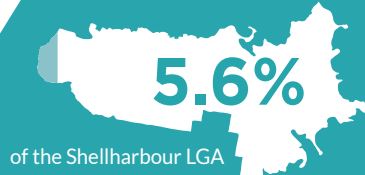


MY PLACE, MY COMMUNITY

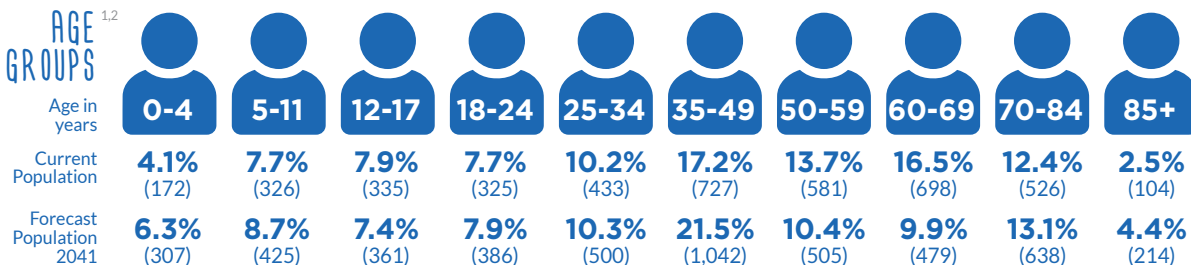
Shellharbour Village & Barrack Point

POPULATION^{1,2}
4,245

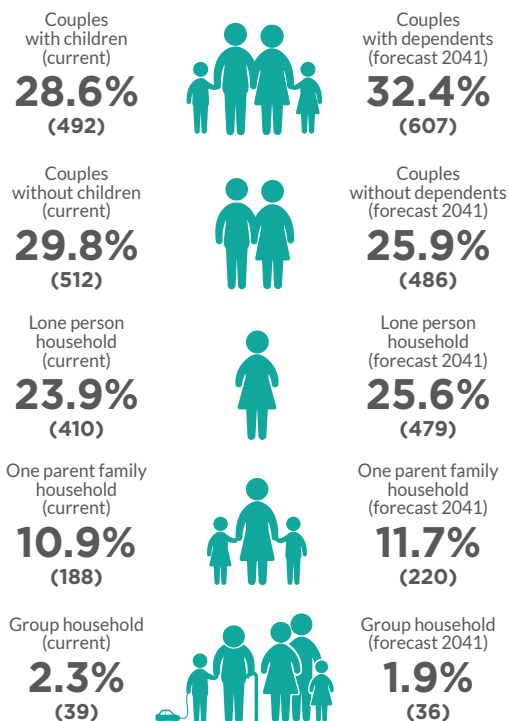


FORECAST POPULATION 2041
4,857
4.7%
of the Shellharbour LGA

AGE GROUPS^{1,2}



HOUSEHOLDS^{1,2}



SEIFA - Level of disadvantage

1016.1

Low income households
22.6%
(377)

Households with no car
5.2%
(89)

Homelessness population
28
(SA2 - Shellharbour - Flinders)

Index of Socio-educational advantage

1036
(average is 1000)

DIVERSITY & INCLUSION¹



Aboriginal and Torres Strait Islander Population
3.6%
(152)



Overseas born
14.7%
(624)



Language spoken at home other than English
7.1%
(302)



Need for assistance (due to disability)
5.8%
(247)

CRIME⁵



- Below NSW rate
- Above NSW rate
- 5 year trend decreasing
- 5 year trend increasing
- 5 year trend stable

* Trend information is not calculated if at least one 12-month period in the selected timeframe had less than 20 incidents

Assault ●*
Homicide ●*
Robbery ●*
Sexual offences ●*
Theft ●*
Malicious damage ●*
Against justice procedures ●*
Disorderly conduct ●*
Drug offences ●*

EMPLOYMENT

Unemployment rate¹
4.2%
(86)

Volunteering
13.0%
(466)¹

Number of jobs⁴
980
(5.3% of the region)

Labour force¹ participation rate
57.5%
(2,071)
population in labour force 15+

TOP 3 EMPLOYMENT INDUSTRIES⁴



Accommodation and food services
25.9%
(253 jobs)



Construction
14.6%
(143 jobs)



Education and training
11.8%
(115 jobs)



Economic output
\$294.4M
5.4%
of total economic output for the region

FEELING SAFE³

Estimated number of people aged 18 years and over who feel safe walking alone in local area after dark
6,174
(53.2 Age Standardised Rate per 100)**
(SA2 Shellharbour - Flinders)

HEALTH³



One of the most disadvantaged areas in NSW in terms of:
• Total admissions to public hospitals
(SA2 - Shellharbour-Flinders)

Long-term health conditions

• Arthritis 11.8% ●
• Asthma 8.2% ●
• Cancer 4.2% ●
• Dementia 0.8% —
• Diabetes 5.0% ●
• Heart disease 4.8% ●
• Kidney disease 1.5% ●
• Lung condition 1.9% ●
• Mental health condition 8.2% ●
• Stroke 1.1% ●

- Below NSW rate
- Above NSW rate
- Same as NSW rate

Population with at least one long-term health condition
34.5%

** An age standardised rate is a summary measure of the rate that a population would have if it had a standard age structure.

AUSTRALIAN EARLY DEVELOPMENT CENSUS⁶

(explores development across a number of domains, including: physical, social, emotional, language and communication)

Vulnerable on two or more domains
7.0%

1 Australian Bureau of Statistics, Census of Population and Housing, 2016 and 2021
2 Population and household forecasts, 2016 to 2041, prepared by .id

3 PHIDU Social Health Atlas
4 REMPLAN, 2022

5 NSW Bureau of Crime Statistics and Research
6 Australian Early Development Census, 2021

7 Australian Curriculum, Assessment and Reporting Authority, 2021. My School
8 Shellharbour Connect website

MY PLACE, MY COMMUNITY

Shellharbour
Village &
Barrack Point



Social Infrastructure,
Assets & Community facilities

Natural assets

Business Precinct

Places of Worship

Parks, Reserves,
Recreation, Attractions

Education Facilities

Aged Care Facility

Retirement Living



Social Infrastructure, Assets & Community facilities

Shellharbour Tourist Park
Shellharbour Heritage Council Chambers
Shellharbour Cemetery
Roo Theatre
Imaginarium / Visitor Information Centre
Shellharbour Surf Life Saving Club
Shellharbour Boat Ramp



Parks, Reserves, Recreation, Attractions

Bardsley Park
Elliott Lake
Eric Creary Park
Ron Costello Oval
Shellharbour Reserve
Little Park
Beverley Whitfield Park and Pool
Myimbarr Community Park



Business Precincts

Shellharbour Village Town Centre



Natural Assets

Black's Beach
Shellharbour North Beach
Cowrie Island Reserve



Education facilities

1 x Public Primary School
1 x Catholic Primary School
1 x Independent (K-12)



Places of Worship

4